



MASTER LEDtube EM/ Mains

MAS LEDtube 1200mm UO 15.5W 840 T8

The Philips MASTER LEDtube integrates a LED light source into a traditional fluorescent form factor. Its unique design creates a perfectly uniform visual appearance which cannot be distinguished from traditional fluorescent. This product is the ideal solution for up lighting in general lighting applications.

Product data

General Information

Cap base	G13 [Medium Bi-Pin Fluorescent]
Nominal lifetime (nom.)	60000 h
Switching cycle	200000X
B50L70	60000 h

Light Technical

Colour code	840 [CCT of 4,000 K]
Beam Angle (Nom)	160 °
Luminous flux (nom.)	2500 lm
Luminous flux (rated) (nom.)	2500 lm
Rated beam angle	160 °
Correlated colour temperature (nom.)	4000 K
Colour consistency	<6
Color rendering index (nom.)	83
LLMF at end of nominal lifetime (nom.)	70 %

Operating and Electrical

Input frequency	50 to 60 Hz
Power (Rated) (Nom)	15.5 W

Lamp current (max.)	73 mA
Lamp current (min.)	67 mA
Starting time (nom.)	0.5 s
Warm-up time to 60% light (nom.)	0.5 s
Power factor (nom.)	0.9
Voltage (Nom)	220-240 V

Temperature

T ambient (max.)	45 °C
T ambient (min.)	-20 °C
T storage (max.)	65 °C
T storage (min.)	-40 °C
T-Case maximum (nom.)	55 °C

Controls and Dimming

Dimmable	No
----------	----

Mechanical and Housing

Product length	1200 mm
----------------	---------

MASTER LEDtube EM/Mains

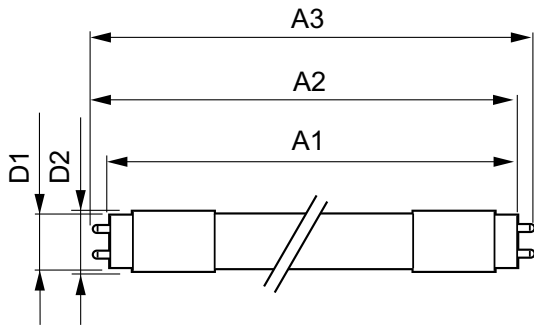
Approval and Application	
Energy efficiency label (EEL)	A++
Energy-saving product	Yes
Approval marks	RoHS compliance CE marking KEMA Keur certificate
Energy Consumption kWh/1000 h	16 kWh
Product Data	
Full product code	871869964723000

Order product name	MAS LEDtube 1200mm UO 15.5W 840 T8
EAN/UPC – product	8718699647230
Order code	64723000
Numerator – quantity per pack	1
Numerator – packs per outer box	10
Material no. (12NC)	929002020602
Net weight (piece)	0.251 kg

Warnings and Safety

· -

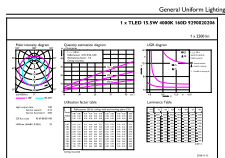
Dimensional drawing



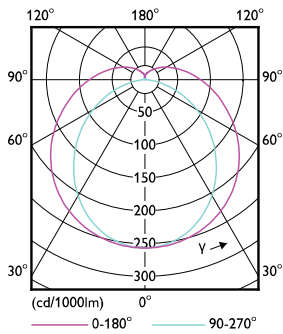
TLED 4ft 220-240V15.5-36W 2500lm4000K13

Product	D1	D2	A1	A2	A3
MAS LEDtube 1200mm UO 15.5W 840 T8	25.8 mm	28 mm	1198.2 mm	1205.3 mm	1212.4 mm

Photometric data



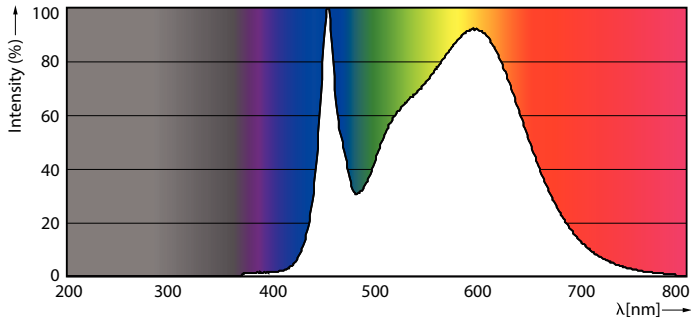
OSRAM Components Ltd. Philips Lighting B.V. Page 1/1



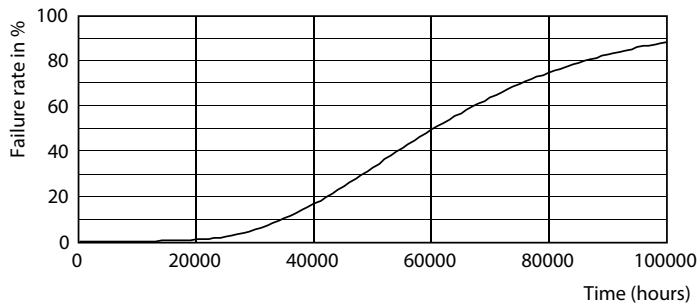
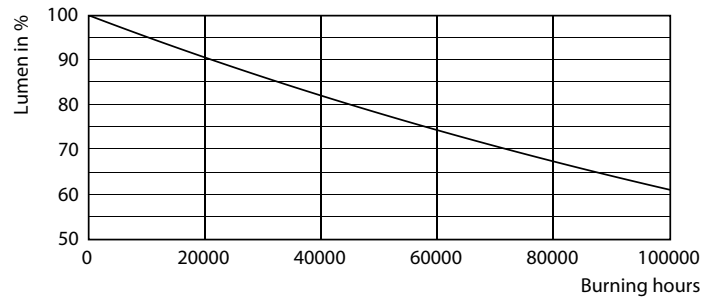
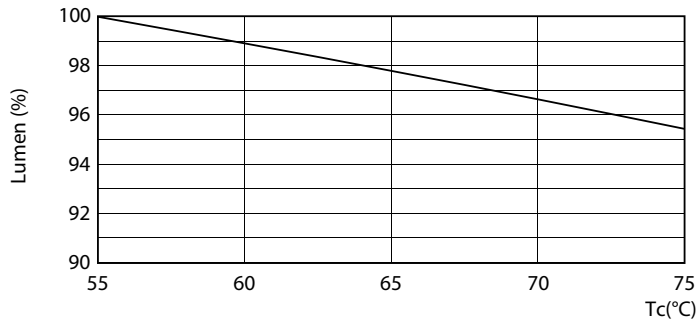
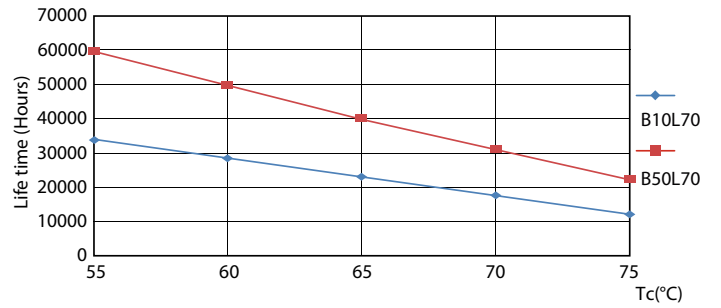
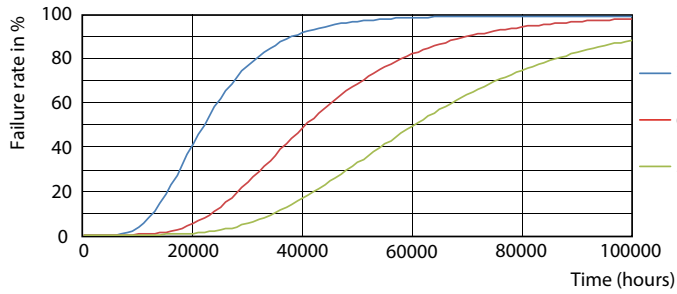
TLED_4ft_220-240V15.5-36W_2500lm_4000K_G13

MASTER LEDtube EM/Mains

Photometric data



Lifetime



MASTER LEDtube EM/Mains

