



MASTER LEDtube EM/ Mains

MAS LEDtube 1200mm UO 15.5W 840 T8

The Philips MASTER LEDtube integrates a LED light source into a traditional fluorescent form factor. Its unique design creates a perfectly uniform visual appearance which cannot be distinguished from traditional fluorescent. This product is the ideal solution for up lighting in general lighting applications.

Product data

General Information	
Cap base	G13 [Medium Bi-Pin Fluorescent]
Nominal lifetime (nom.)	60000 h
Switching cycle	200000X
B50L70	60000 h

Light Technical	
Colour Code	840 [CCT of 4,000 K]
Beam Angle (Nom)	160 °
Lamp Luminous Flux 25°C EL (Nom)	2500 lm
Lamp Luminous Flux (Nom)	2500 lm
Rated beam angle	160 °
Colour Temperature, horizontal (Nom)	4000 K
Colour consistency	<6
Colour Rendering Index,horiz (Nom)	83
LLMF at end of nominal lifetime (nom.)	70 %

Operating and Electrical	
Input frequency	50 to 60 Hz
Power (Rated) (Nom)	15.5 W

Lamp current (max.)	73 mA
Lamp current (min.)	67 mA
Starting time (nom.)	0.5 s
Warm-up time to 60% light (nom.)	0.5 s
Power factor (nom.)	0.9
Voltage (Nom)	220-240 V

Temperature	
T ambient (max.)	45 °C
T ambient (min.)	-20 °C
T storage (max.)	65 °C
T storage (min.)	-40 °C
T-Case maximum (nom.)	55 °C

Controls and Dimming	
Dimmable	No

Mechanical and Housing	
Product length	1200 mm

MASTER LEDtube EM/Mains

Approval and Application

Energy efficiency label (EEL)	A++
Energy-saving product	Yes
Approval marks	RoHS compliance CE marking KEMA Keur certificate
Energy Consumption kWh/1000 h	16 kWh

Product Data

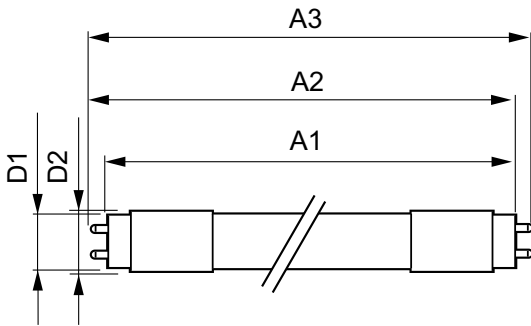
Full product code	871869964723000
-------------------	-----------------

Order product name	MAS LEDtube 1200mm UO 15.5W 840 T8
EAN/UPC – product	8718699647230
Order code	929002020602
Numerator – quantity per pack	1
Numerator – packs per outer box	10
Material no. (12NC)	929002020602
Net weight (piece)	0.251 kg

Warnings and Safety

· -

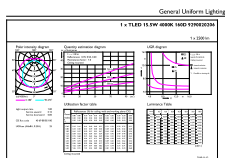
Dimensional drawing



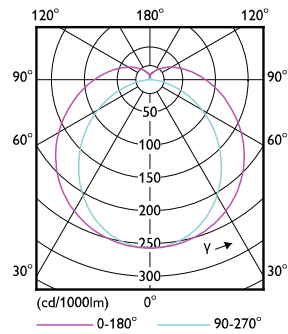
TLED 4ft 220-240V15.5-36W 2500lm4000KG13

Product	D1	D2	A1	A2	A3
MAS LEDtube 1200mm UO 15.5W 840 T8	25.8 mm	28 mm	1198.2 mm	1205.3 mm	1212.4 mm

Photometric data



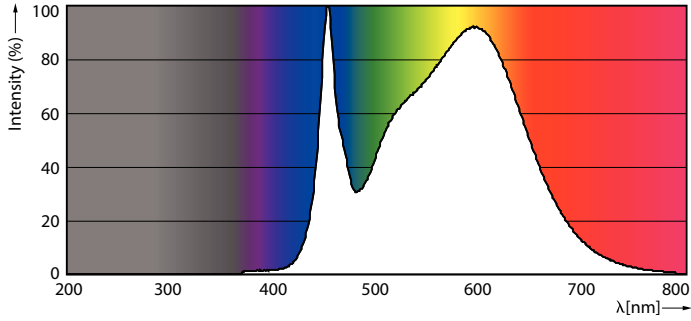
General Uniform Lighting
TLED 4ft 220-240V15.5-36W 2500lm4000KG13
Page 11



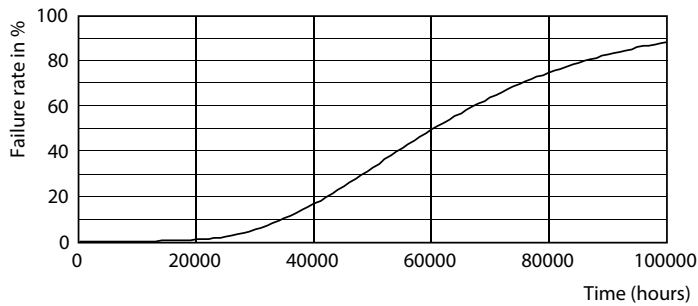
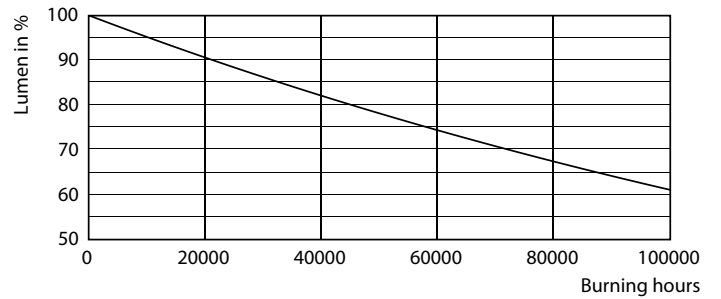
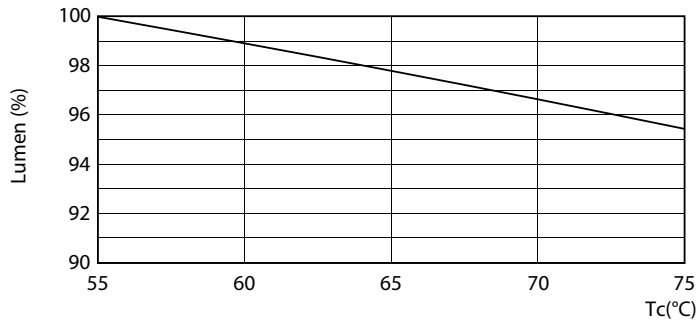
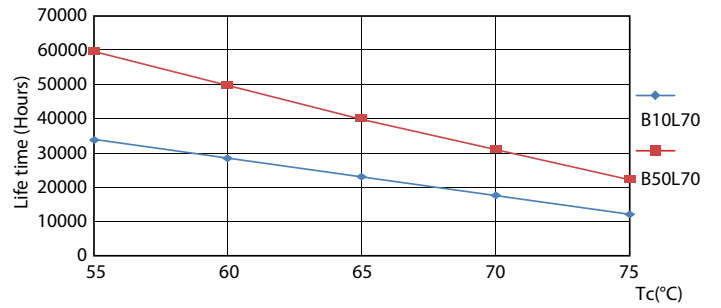
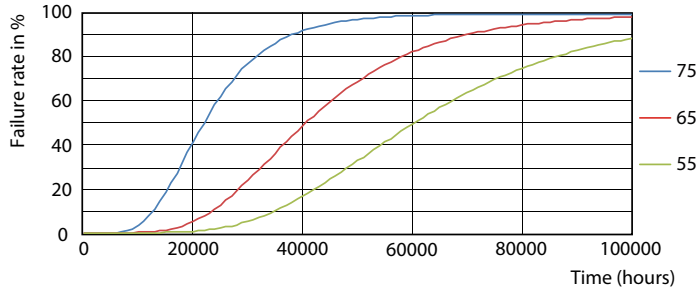
TLED_4ft_220-240V15.5-36W_2500lm_4000K_G13

MASTER LEDtube EM/Mains

Photometric data



Lifetime



MASTER LEDtube EM/Mains

