



MASTER LEDtube EM/ Mains T8

MAS LEDtube 1200mm UO 15.5W 840 T8

The Philips MASTER LEDtube integrates a LED light source into a traditional fluorescent form factor. Its unique design creates a perfectly uniform visual appearance, which cannot be distinguished from traditional fluorescent. These T8 LED tubes are the right choice for absolute performance and are designed to stand up to everyday conditions. Unparalleled savings thanks to low energy consumption and an exceptionally long lifetime ensure this tube masters every demanding application.

Warnings and Safety

- NOTE: The overall energy efficiency and light distribution of any installation that uses these lamps will be determined by the design of the installation.

Product data

| General Information | |
|------------------------------------|--|
| Cap-Base | G13 ROT (Rotating) [Medium Bi-Pin Fluorescent] |
| Nominal lifetime | 60,000 hour(s) |
| Switching Cycle | 200,000 |
| Lighting Technology | LED |
| EU RoHS compliant | Yes |
| Light Technical | |
| Color Code | 840 [CCT of 4000K] |
| Beam Angle (Nom) | 160 degree(s) |
| Luminous Flux | 2,500 lm |
| Color Designation | Cool White (CW) |
| Correlated Color Temperature (Nom) | 4000 K |

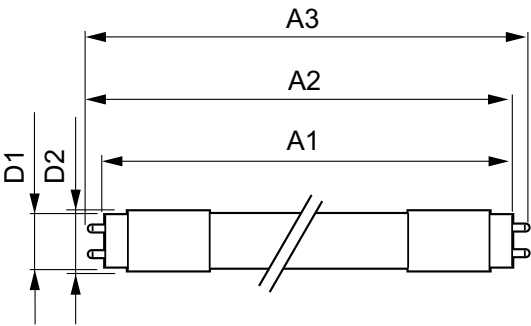
| Luminous Efficacy (rated) (Nom) | 161.00 lm/W |
|---------------------------------------|-------------|
| Color Consistency | <6 |
| Color rendering index (CRI) | 83 |
| LLMF At End Of Nominal Lifetime (Nom) | 70 % |
| Operating and Electrical | |
| Line Frequency | 50 to 60 Hz |
| Input Frequency | 50 to 60 Hz |
| Power Consumption | 15.5 W |
| Lamp Current (Max) | 73 mA |
| Lamp Current (Min) | 67 mA |
| Starting Time (Nom) | 0.5 s |
| Warm-up time to 60% light | 0.5 s |
| Power Factor (Fraction) | 0.9 |

MASTER LEDtube EM/Mains T8

| | |
|---------------------------------|-----------------|
| Voltage (Nom) | 220-240 V |
| Temperature | |
| Ambient temperature range | -20 °C to 45 °C |
| T-Case Maximum (Nom) | 55 °C |
| Controls and Dimming | |
| Dimmable | No |
| Mechanical and Housing | |
| Bulb Material | Plastic |
| Product Length | 1,200 mm |
| Bulb Shape | T8 |
| Approval and Application | |
| Energy Saving Product | Yes |

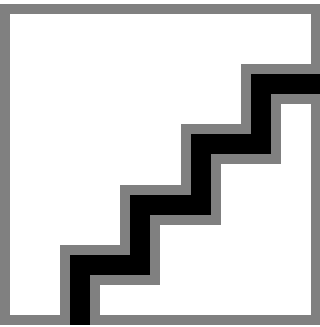
| | |
|---------------------------------|--|
| Approval Marks | RoHS compliance TUV CE marking KEMA Keur certificate |
| Energy Consumption kWh/1000 h | 16 kWh |
| Product Data | |
| Order product name | MAS LEDtube 1200mm UO 15.5W 840 T8 |
| Full product name | MAS LEDtube 1200mm UO 15.5W 840 T8 |
| Full product code | 871869964723000 |
| Order code | 929002020602 |
| Material Nr. (12NC) | 929002020602 |
| Numerator - Quantity Per Pack | 1 |
| EAN/UPC - Product/Case | 8718699647230 |
| Numerator - Packs per outer box | 10 |
| EAN/UPC - Case | 8718699647247 |

Dimensional drawing

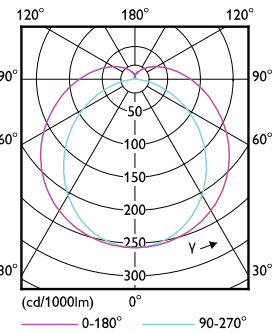


| Product | D1 | D2 | A1 | A2 | A3 |
|------------------------------------|---------|-------|------------|------------|------------|
| MAS LEDtube 1200mm UO 15.5W 840 T8 | 25.8 mm | 28 mm | 1,198.2 mm | 1,205.3 mm | 1,212.4 mm |

Photometric data



Accent Lighting Spots - MAS LEDtube 1200mm UO 15.5W 840 T8



Light Distribution Diagram - MAS LEDtube 1200mm UO 15.5W 840 T8

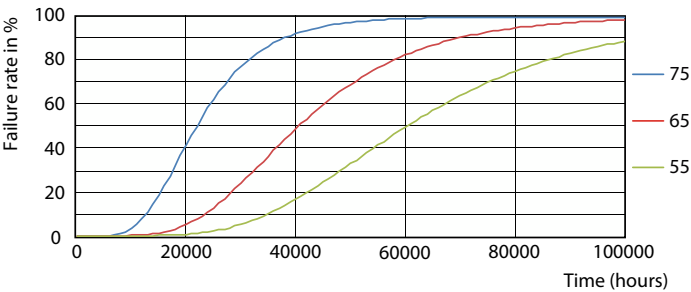
MASTER LEDtube EM/Mains T8

Photometric data

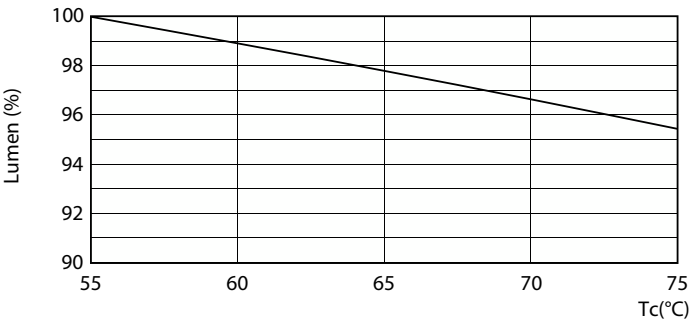


Spectral Power Distribution Colour - MAS LEDtube 1200mm UO 15.5W 840 T8

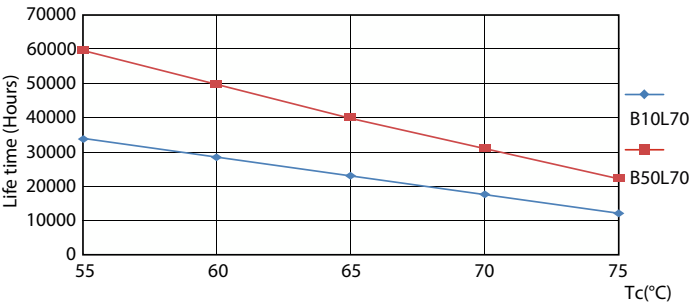
Lifetime



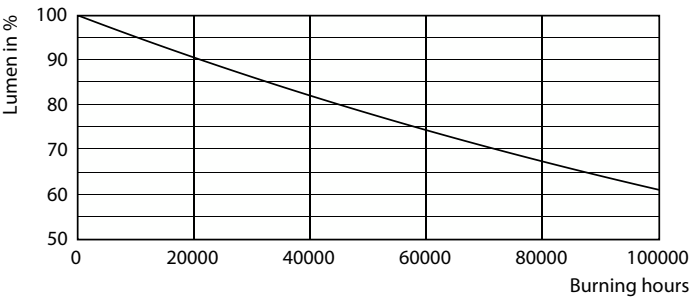
Life Expectancy Diagram - MAS LEDtube 1200mm UO 15.5W 840 T8



Lumen Maintenance Diagram - MAS LEDtube 1200mm UO 15.5W 840 T8



Life Expectancy Diagram - MAS LEDtube 1200mm UO 15.5W 840 T8



Lumen Maintenance Diagram - MAS LEDtube 1200mm UO 15.5W 840 T8

MASTER LEDtube EM/Mains T8

Lifetime

Life Expectancy Diagram - MAS LEDtube 1200mm UO 15.5W 840 T8

