



MASTER LEDtube EM/ Mains

MAS LEDtube 1200mm UO 15.5W 865 T8

The Philips MASTER LEDtube integrates a LED light source into a traditional fluorescent form factor. Its unique design creates a perfectly uniform visual appearance which cannot be distinguished from traditional fluorescent. This product is the ideal solution for up lighting in general lighting applications.

Product data

General Information		Lamp current (max.)	
Cap base	G13 [Medium Bi-Pin Fluorescent]	Lamp current (min.)	73 mA
Nominal lifetime (nom.)	60000 h	Starting time (nom.)	67 mA
Switching cycle	200000X	Warm-up time to 60% light (nom.)	0.5 s
B50L70	60000 h	Power factor (nom.)	0.9
Voltage (Nom)		220-240 V	
Light Technical		Temperature	
Colour Code	865 [CCT of 6,500 K]	T ambient (max.)	45 °C
Technical Beam Angle (Nom)	160 °	T ambient (min.)	-20 °C
Lamp Luminous Flux 25°C EL (Nom)	2500 lm	T storage (max.)	65 °C
Lamp Luminous Flux (Nom)	2500 lm	T storage (min.)	-40 °C
Rated beam angle	160 °	T-Case maximum (nom.)	55 °C
Colour Temperature, horizontal (Nom)	6500 K	Controls and Dimming	
Colour consistency	<6	Dimmable	No
Colour Rendering Index,horiz (Nom)	83	Mechanical and Housing	
LLMF at end of nominal lifetime (nom.)	70 %	Product length	1200 mm
Operating and Electrical			
Input frequency	50 to 60 Hz		
Power (Rated) (Nom)	15.5 W		

MASTER LEDtube EM/Mains

Approval and Application

Energy efficiency label (EEL)	A++
Energy-saving product	Yes
Approval marks	RoHS compliance CE marking KEMA Keur certificate
Energy Consumption kWh/1000 h	16 kWh

Product Data

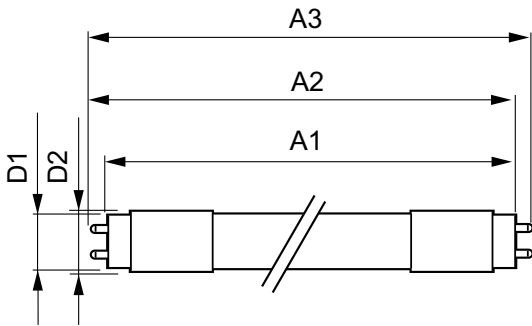
Full product code	871869964725400
-------------------	-----------------

Order product name	MAS LEDtube 1200mm UO 15.5W 865 T8
EAN/UPC – product	8718699647254
Order code	929002020702
Numerator – quantity per pack	1
Numerator – packs per outer box	10
Material no. (12NC)	929002020702
Net weight (piece)	0.251 kg

Warnings and Safety

· -

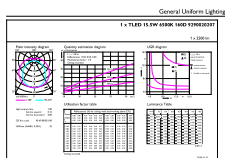
Dimensional drawing



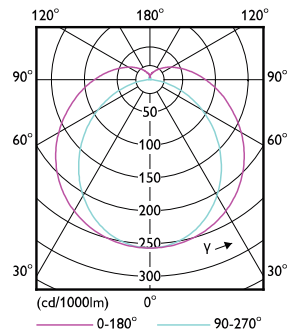
TLED 4ft 220-240V 15.5-36W2500lm6500K13

Product	D1	D2	A1	A2	A3
MAS LEDtube 1200mm UO 15.5W 865 T8	25.8 mm	28 mm	1198.2 mm	1205.3 mm	1212.4 mm

Photometric data



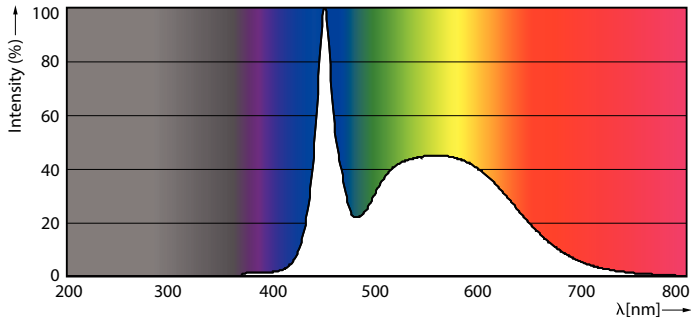
General Uniform Lighting
TLED 4ft 220-240V 15.5-36W2500lm6500K13
Page 11



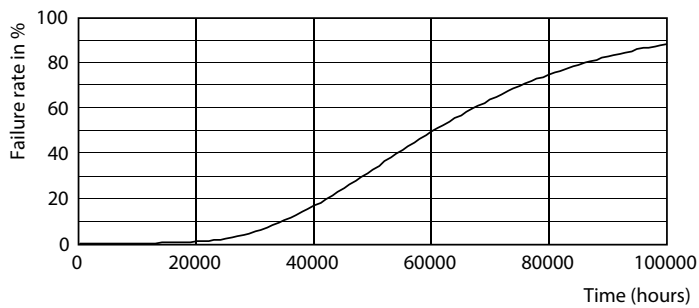
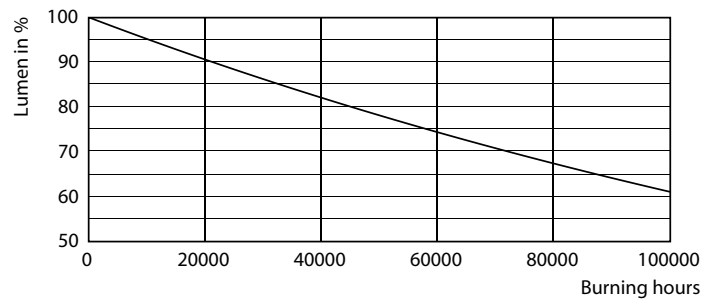
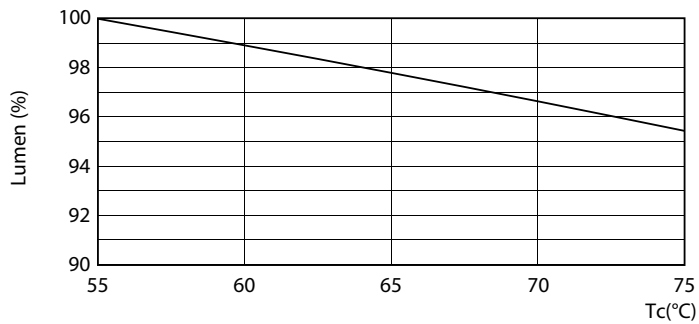
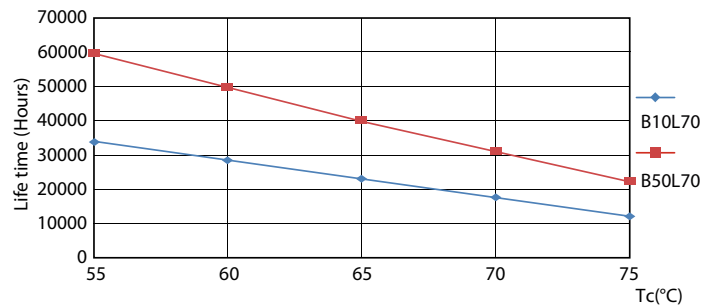
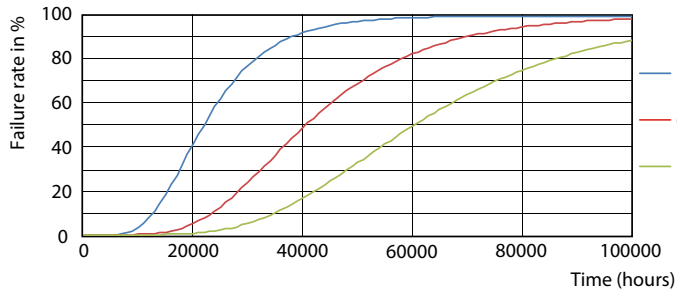
TLED_4ft_220-240V_15.5-36W2500lm_6500K_G13

MASTER LEDtube EM/Mains

Photometric data



Lifetime



MASTER LEDtube EM/Mains

