



# MASTER LEDtube EM/ Mains

## MAS LEDtube 1500mm UO 23W 830 T8

The Philips MASTER LEDtube integrates a LED light source into a traditional fluorescent form factor. Its unique design creates a perfectly uniform visual appearance which cannot be distinguished from traditional fluorescent. This product is the ideal solution for up lighting in general lighting applications.

### Product data

General Information	
Cap base	G13 [ Medium Bi-Pin Fluorescent]
Nominal lifetime (nom.)	60000 h
Switching cycle	200000X
B50L70	60000 h

Light Technical	
Colour code	830 [ CCT of 3,000 K]
Beam Angle (Nom)	160 °
Luminous flux (nom.)	3400 lm
Luminous flux (rated) (nom.)	3400 lm
Rated beam angle	160 °
Correlated colour temperature (nom.)	3000 K
Colour consistency	<6
Color rendering index (nom.)	83
LLMF at end of nominal lifetime (nom.)	70 %

Operating and Electrical	
Input frequency	50 to 60 Hz
Power (Rated) (Nom)	23 W

Lamp current (max.)	108 mA
Lamp current (min.)	99 mA
Starting time (nom.)	0.5 s
Warm-up time to 60% light (nom.)	0.5 s
Power factor (nom.)	0.9
Voltage (Nom)	220-240 V

Temperature	
T ambient (max.)	45 °C
T ambient (min.)	-20 °C
T storage (max.)	65 °C
T storage (min.)	-40 °C
T-Case maximum (nom.)	60 °C

Controls and Dimming	
Dimmable	No

Mechanical and Housing	
Product length	1500 mm

# MASTER LEDtube EM/Mains

## Approval and Application

Energy efficiency label (EEL)	A++
Energy-saving product	Yes
Approval marks	RoHS compliance CE marking KEMA Keur certificate
Energy Consumption kWh/1000 h	23 kWh

## Product Data

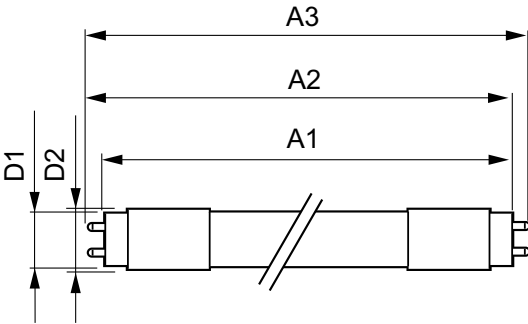
Full product code	871869964727800
-------------------	-----------------

Order product name	MAS LEDtube 1500mm UO 23W 830 T8
EAN/UPC – product	8718699647278
Order code	64727800
Numerator – quantity per pack	1
Numerator – packs per outer box	10
Material no. (12NC)	929002020802
Net weight (piece)	0.310 kg

## Warnings and Safety

· -

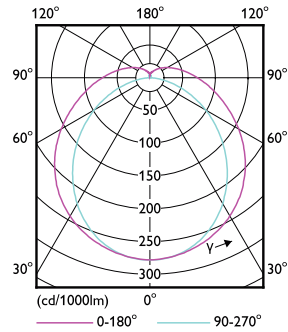
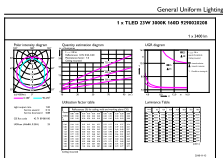
## Dimensional drawing



TLED 5ft 220-240V 23-58W 3400lm3000K G13

Product	D1	D2	A1	A2	A3
MAS LEDtube 1500mm UO 23W 830 T8	25.8 mm	28 mm	1498.7 mm	1505.8 mm	1512.9 mm

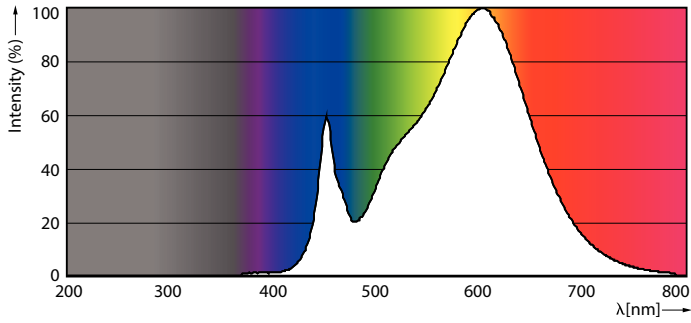
## Photometric data



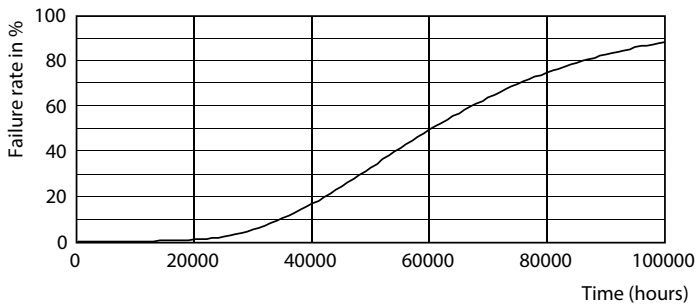
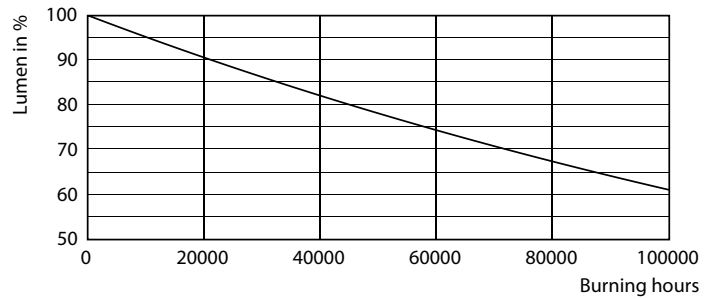
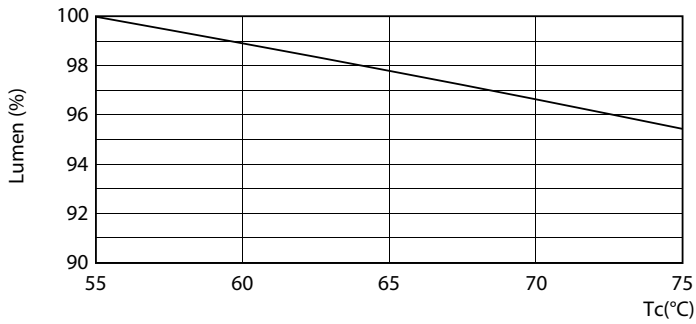
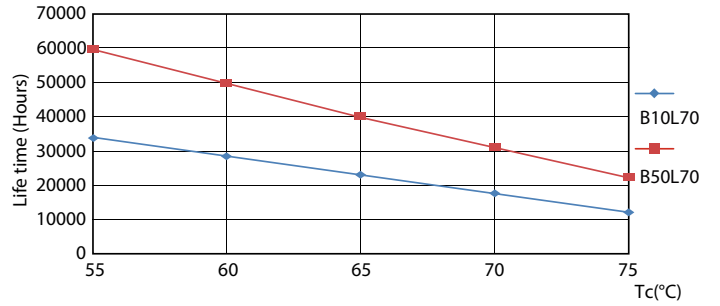
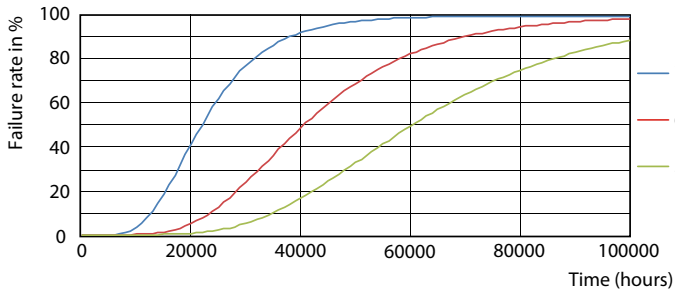
TLED\_5ft\_220-240V\_23-58W\_3400lm\_3000K\_G13

# MASTER LEDtube EM/Mains

## Photometric data



## Lifetime



## MASTER LEDtube EM/Mains

