



MASTER LEDtube EM/ Mains

MASTER LEDtube 1500mm UO 23W 840 T8

The Philips MASTER LEDtube integrates a LED light source into a traditional fluorescent form factor. Its unique design creates a perfectly uniform visual appearance which cannot be distinguished from traditional fluorescent. This product is the ideal solution for up lighting in general lighting applications.

Product data

General Information	
Cap base	G13 [Medium Bi-Pin Fluorescent]
Nominal lifetime (nom.)	60000 h
Switching cycle	200000X
B50L70	60000 h
Light Technical	
Colour Code	840 [CCT of 4,000 K]
Technical Beam Angle (Nom)	160 °
Lamp Luminous Flux 25°C EL (Nom)	3700 lm
Lamp Luminous Flux (Nom)	3700 lm
Rated beam angle	160 °
Colour Temperature, horizontal (Nom)	4000 K
Colour consistency	<6
Colour Rendering Index,horiz (Nom)	83
LLMF at end of nominal lifetime (nom.)	70 %
Operating and Electrical	
Input frequency	50 to 60 Hz
Power (Rated) (Nom)	23 W

Lamp current (max.)	108 mA
Lamp current (min.)	99 mA
Starting time (nom.)	0.5 s
Warm-up time to 60% light (nom.)	0.5 s
Power factor (nom.)	0.9
Voltage (Nom)	220-240 V
Temperature	
T ambient (max.)	45 °C
T ambient (min.)	-20 °C
T storage (max.)	65 °C
T storage (min.)	-40 °C
T-Case maximum (nom.)	60 °C
Controls and Dimming	
Dimmable	No
Mechanical and Housing	
Product length	1500 mm

MASTER LEDtube EM/Mains

Approval and Application

Energy efficiency label (EEL)	A++
Energy-saving product	Yes
Approval marks	RoHS compliance CE marking KEMA Keur certificate
Energy Consumption kWh/1000 h	23 kWh

Product Data

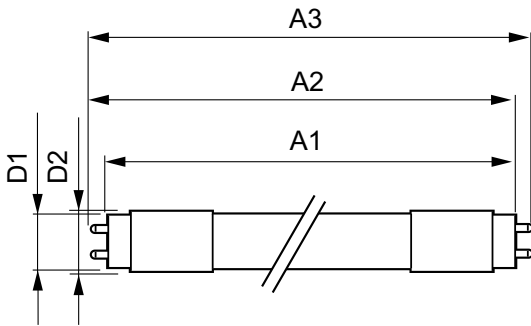
Full product code	871869964729200
-------------------	-----------------

Order product name	MASTER LEDtube 1500mm UO 23W 840 T8
EAN/UPC – product	8718699647292
Order code	929002020902
Numerator – quantity per pack	1
Numerator – packs per outer box	10
Material no. (12NC)	929002020902
Net weight (piece)	0.310 kg

Warnings and Safety

· -

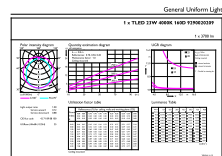
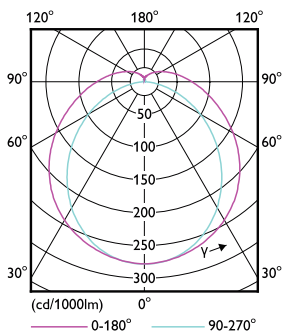
Dimensional drawing



TLED 5ft 220-240V 23-58W 3700lm4000K G13

Product	D1	D2	A1	A2	A3
MASTER LEDtube 1500mm UO 23W 840 T8	25.8 mm	28 mm	1498.7 mm	1505.8 mm	1512.9 mm

Photometric data

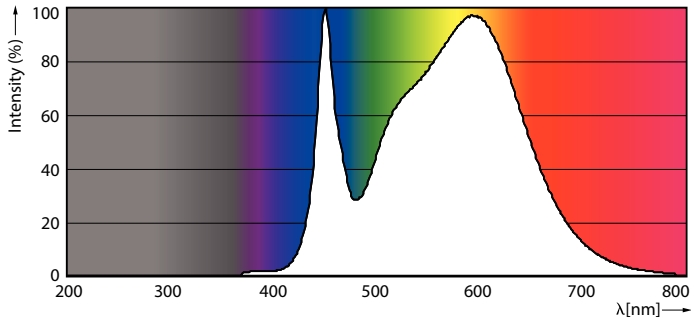


© 2019 Philips Lighting B.V. Page 1/1

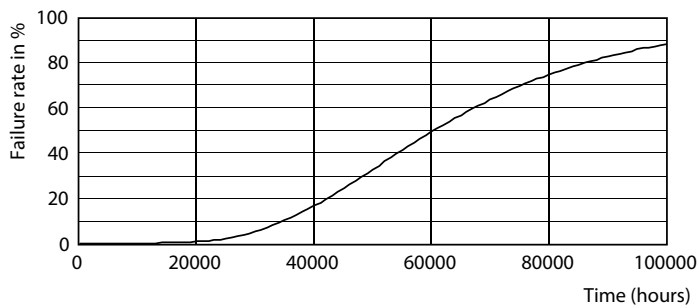
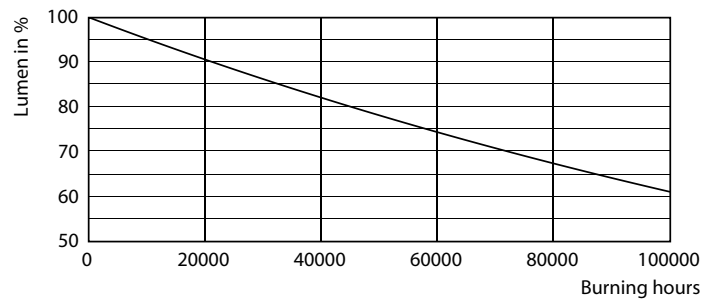
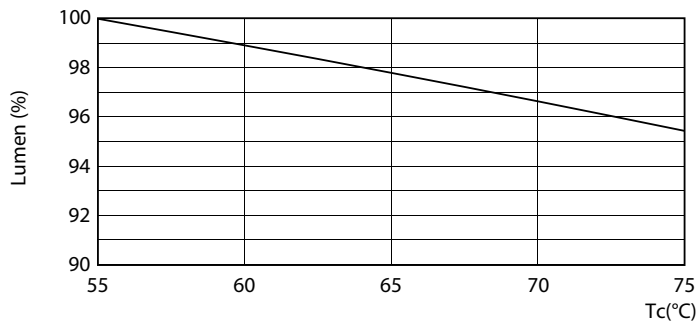
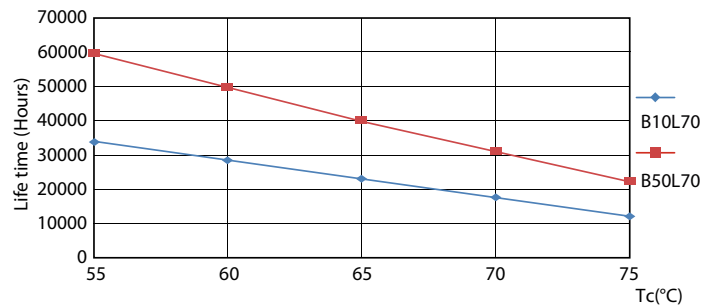
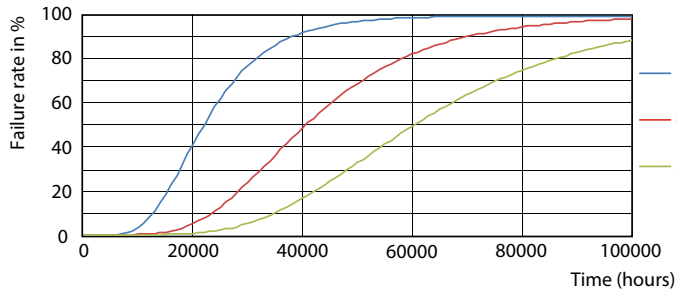
TLED_5ft_220-240V_23-58W_3700lm_4000K_G13

MASTER LEDtube EM/Mains

Photometric data



Lifetime



MASTER LEDtube EM/Mains

