



MASTER LEDtube EM/ Mains T8

MAS LEDtube 1500mm UO 23W 840 T8

The Philips MASTER LEDtube integrates a LED light source into a traditional fluorescent form factor. Its unique design creates a perfectly uniform visual appearance which cannot be distinguished from traditional fluorescent. For those that are looking for value for money within limited budget and re-lamping efforts for better light effect and lifetime.

Product data

General Information		Lamp Current (Max)	
Cap-Base	G13 [Medium Bi-Pin Fluorescent]	Lamp Current (Max)	108 mA
Nominal Lifetime (Nom)	60000 h	Lamp Current (Min)	99 mA
Switching Cycle	200000X	Starting Time (Nom)	0.5 s
B50L70	60000 h	Warm Up Time to 60% Light (Nom)	0.5 s
Light Technical		Power Factor (Nom)	0.9
Color Code	840 [CCT of 4000K]	Voltage (Nom)	220-240 V
Beam Angle (Nom)	160 °	Temperature	
Luminous Flux (Nom)	3700 lm	T-Ambient (Max)	45 °C
Luminous Flux (Rated) (Nom)	3700 lm	T-Ambient (Min)	-20 °C
Rated Beam Angle	160 °	T-Storage (Max)	65 °C
Correlated Color Temperature (Nom)	4000 K	T-Storage (Min)	-40 °C
Color Consistency	<6	T-Case Maximum (Nom)	60 °C
Color Rendering Index (Nom)	83	Controls and Dimming	
LLMF At End Of Nominal Lifetime (Nom)	70 %	Dimmable	No
Operating and Electrical		Mechanical and Housing	
Input Frequency	50 to 60 Hz	Product Length	1500 mm
Power (Rated) (Nom)	23 W		

MASTER LEDtube EM/Mains T8

Approval and Application

Energy Efficiency Label (EEL)	A++
Energy Saving Product	Yes
Approval Marks	RoHS compliance TUV CE marking KEMA Keur certificate
Energy Consumption kWh/1000 h	23 kWh

Product Data

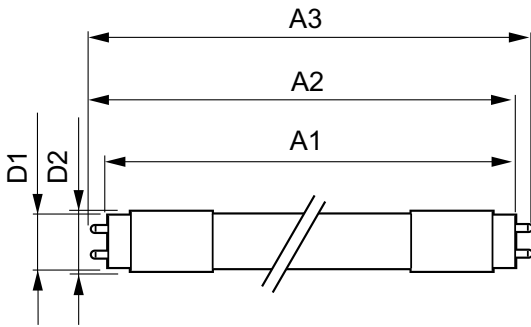
Full product code	871869964729200
-------------------	-----------------

Order product name	MAS LEDtube 1500mm UO 23W 840 T8
EAN/UPC - Product	8718699647292
Order code	929002020902
Numerator - Quantity Per Pack	1
Numerator - Packs per outer box	10
Material Nr. (12NC)	929002020902
Net Weight (Piece)	0.310 kg

Warnings and Safety

- NOTES: The overall energy efficiency and light distribution of any installation that uses these lamps are determined by the design of the installation.

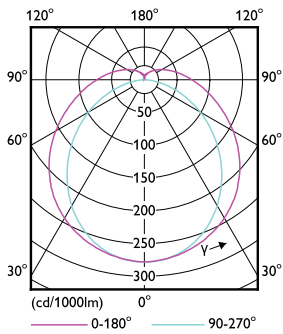
Dimensional drawing



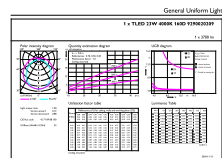
TLED 5ft 220-240V 23-58W 3700lm4000K G13

Product	D1	D2	A1	A2	A3
MAS LEDtube 1500mm UO 23W 840 T8	25.8 mm	28 mm	1498.7 mm	1505.8 mm	1512.9 mm

Photometric data



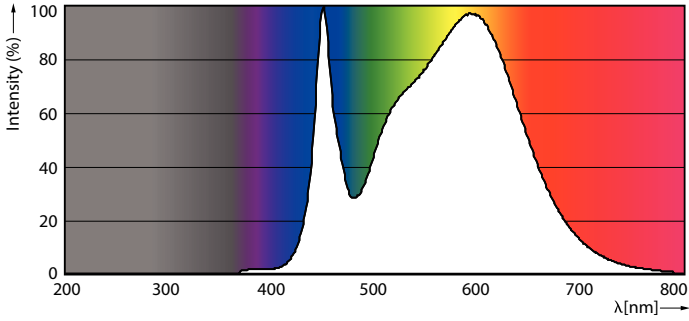
TLED_5ft_220-240V_23-58W_G13



TLED_5ft_220-240V_23-58W_3700lm_4000K_G13

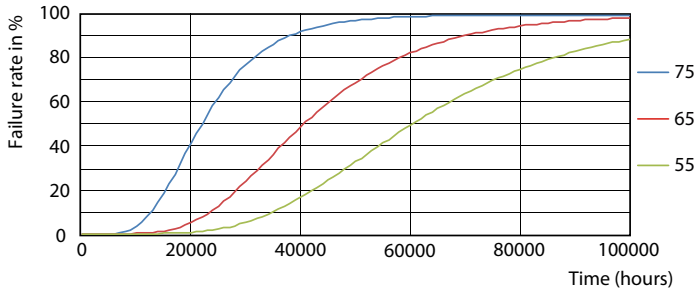
MASTER LEDtube EM/Mains T8

Photometric data

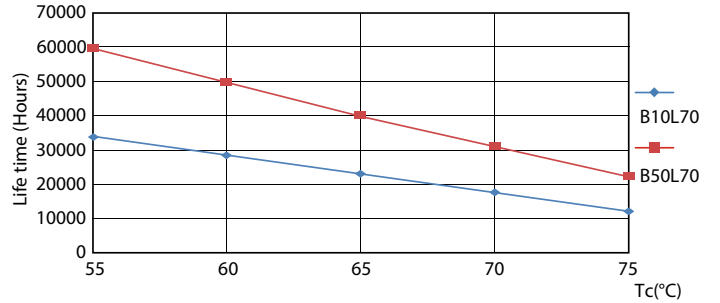


TLED_5ft_220-240V_23-58W_3700lm_4000K_G13

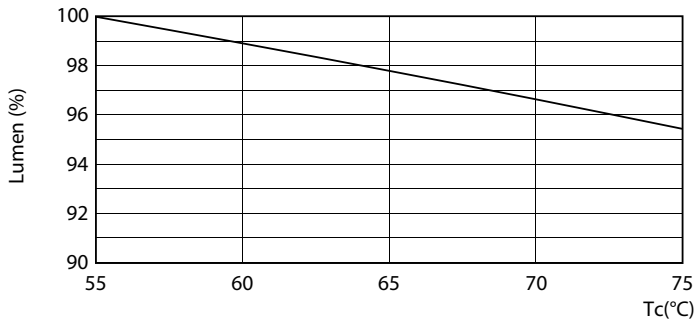
Lifetime



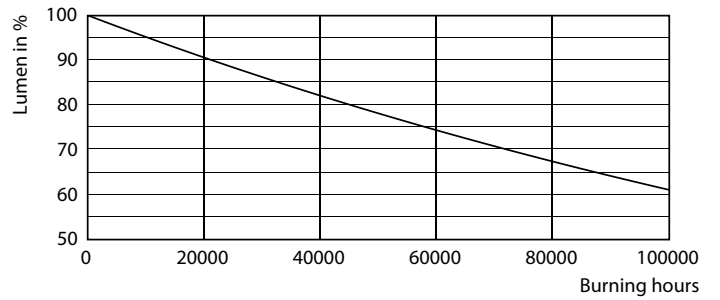
TLED_220-240V_G13-FailureRate



TLED_220-240V_G13-LifetimeVsTc



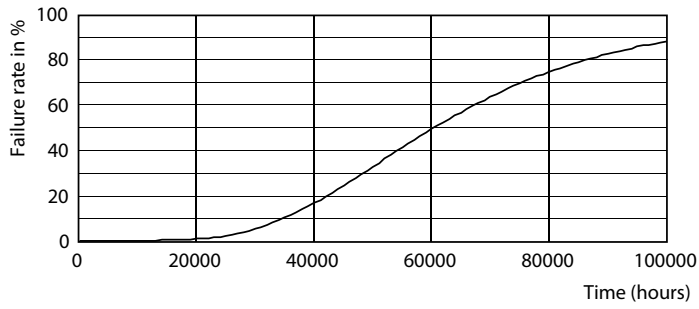
TLED_220-240V_G13-LumenVsTc



TLED_220-240V_G13

MASTER LEDtube EM/Mains T8

Lifetime



TLED_220-240V_G13

