



# T8

## 10T8/COR/48-835/IF15/G/DIM 10/1

Our TLEDs are available in InstantFit (Type A / Type C) or MainsFit (Ballast bypass / Type B) versions. The InstantFit lamps work on a broad variety of ballasts and LED drivers. Only InstantFit has over 15,000 lamp & ballast combinations delivering even light output, energy savings and a long lifetime. Our MainsFit products feature a double-ended design, simplifying installation while a proprietary safety circuit minimizes a shock risk. Lamp sizes range from 2-foot to 8-foot and U-bend with a variety of lumen outputs.

### Product data

General Information	
Base	G13 [ Medium Bi-Pin Fluorescent]
EU RoHS compliant	Yes
Nominal Lifetime (Nom)	50000 h
Switching Cycle	50000X
Light Technical	
Color Code	835 [ CCT of 3500K]
Beam Angle (Nom)	240 °
Initial lumen (Nom)	1500 lm
Color Designation	White (WH)
Correlated Color Temperature (Nom)	3500 K
Luminous Efficacy (rated) (Nom)	160.00 lm/W
Color Consistency	<6
Color Rendering Index (Nom)	82
LLMF At End Of Nominal Lifetime (Nom)	70 %
Operating and Electrical	
Input Frequency	25000-105000 Hz
Power (Rated) (Nom)	10 W

Lamp Current (Max)	260 mA
Lamp Current (Min)	100 mA
Starting Time (Nom)	0.5 s
Warm Up Time to 60% Light (Nom)	0.5 s
UL Type	Type A - works on ballast Type C - works with dedicated LED driver Type A+C - works with both ballasts and the LED driver
Power Factor (Nom)	0.9
Voltage (Nom)	120-277, 347 V
Temperature	
T-Ambient (Max)	45 °C
T-Ambient (Min)	-20 °C
T-Storage (Max)	65 °C
T-Storage (Min)	-40 °C
T-Case Maximum (Nom)	50 °C
Controls and Dimming	
Dimmable	Yes

# T8

## Mechanical and Housing

Product Length 1200 mm

## Approval and Application

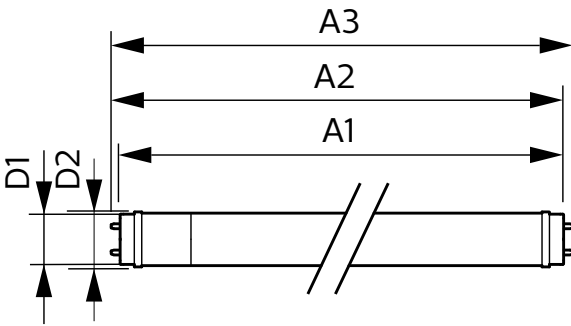
Energy Efficiency Label (EEL) Not applicable  
 Energy Saving Product Yes  
 Approbation Marks RoHS compliance UL certificate DLC compliance  
 Energy Consumption kWh/1000 h - kWh

## Product Data

Order product name 10T8/COR/48-835/IF15/G/DIM 10/1

EAN/UPC - Product 046677553227  
 Order code 553222  
 Numerator - Quantity Per Pack 1  
 Numerator - Packs per outer box 10  
 Material Nr. (12NC) 929002252834  
 Net Weight (Piece) 0.230 kg  
 Model Number 9290022528

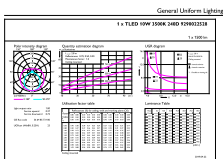
## Dimensional drawing



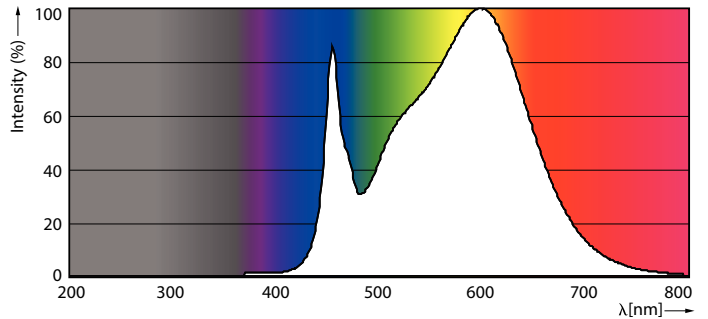
TLED120-277V 16.5W-25/28/32W 3500K G14ND

Product	D1	D2	A1	A2	A3
10T8/COR/48-835/ IF15/G/DIM 10/1	25.7 mm	28 mm	1198.1 mm	1205.2 mm	1212.3 mm

## Photometric data

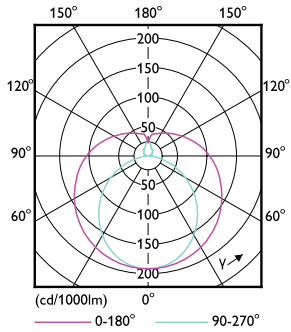


LEDTube\_10T8\_COR\_48-835\_IF15\_G 10\_1-GUL



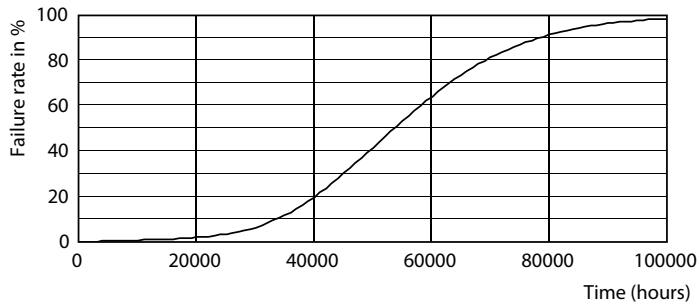
LEDTube\_10T8\_COR\_48-835\_IF15\_G 10\_1-POC

Photometric data

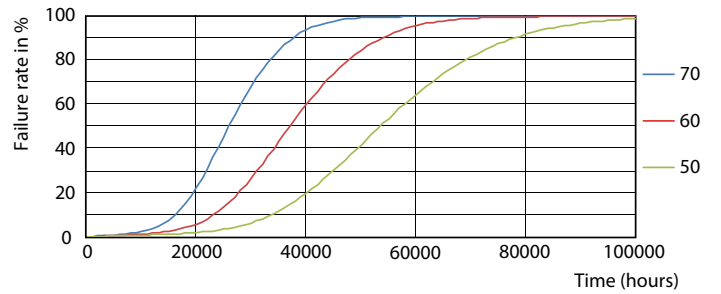


LEDtube 10W G13 840 ND

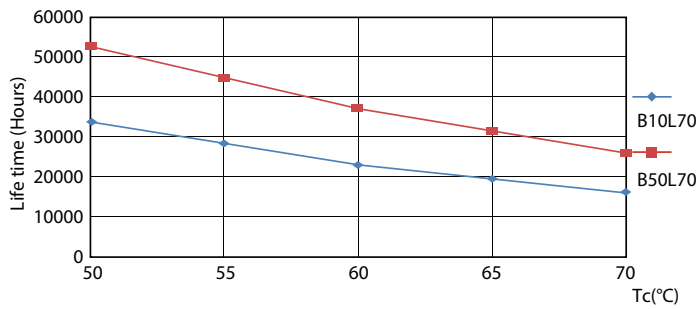
Lifetime



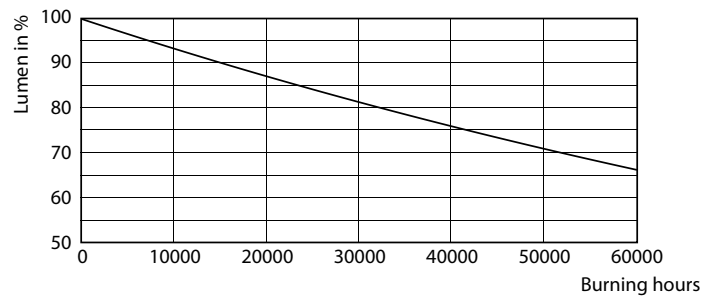
LEDtube 10W G13 850 ND



LEDtube 10W G13 850 ND



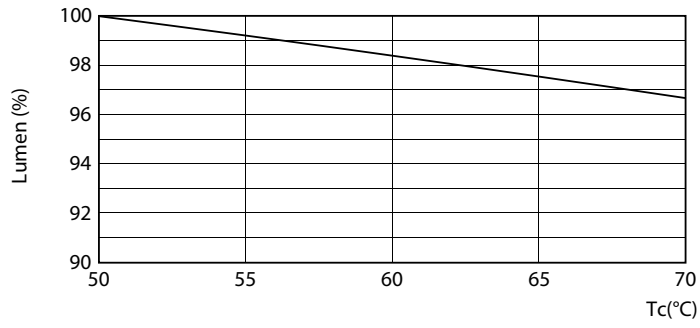
LEDtube 10W G13 850 ND



LEDtube 10W G13 850 ND

# T8

## Lifetime



LEDtube 10W G13 850 ND

