



# T8

## 10.5T8/MAS/48-835/MF16/P 10/1

Introducing Philips MainsFit (UL Type B) MasterClass T8 LED tubes with industry leading reliability, shatter-prevention and lifetime. The UL Type B LED tubes are designed with easy installation and long-term maintenance simplicity in mind. Upgrade your lighting to MasterClass and realize 70,000 hour LED lifetime backed by a 7-year, full replacement limited warranty.

### Product data

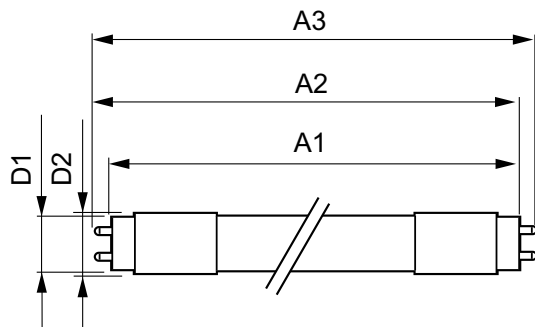
General information		Lamp Current (Max)	
Base	G13 [ Medium Bi-Pin Fluorescent]	Lamp Current (Max)	100 mA
EU RoHS compliant	Yes	Lamp Current (Min)	43 mA
Nominal Lifetime (Nom)	70000 h	Starting Time (Nom)	0.5 s
Switching Cycle	50000X	Warm Up Time to 60% Light (Nom)	0.5 s
Tier	MasterClass	UL Type	Type B - bypass the ballast
Power Factor (Nom)		Power Factor (Nom)	0.9
Voltage (Nom)		Voltage (Nom)	120-277 V
Light technical		Temperature	
Color Code	835 [ CCT of 3500K]	T-Ambient (Max)	113 °F
Beam Angle (Nom)	180 °	T-Ambient (Min)	-4 °F
Initial lumen (Nom)	1600 lm	T-Storage (Range)	-40 °C to 65 °C
Luminous Flux (Rated) (Nom)	1600 lm	T-Storage (Max)	149 °F
Color Designation	White (WH)	T-Storage (Min)	-40 °F
Correlated Color Temperature (Nom)	3500 K	T-Case Maximum (Nom)	158 °F
Luminous Efficacy (rated) (Nom)	152.00 lm/W	Controls and dimming	
Color Consistency	<6	Dimmable	No
Color Rendering Index (Nom)	80	Mechanical and housing	
LLMF At End Of Nominal Lifetime (Nom)	70 %	Bulb Material	Plastic
Operating and electrical		Product Length	47-1/4 in
Input Frequency	50 to 60 Hz		
Power (Rated) (Nom)	10.5 W		

# T8

Bulb Shape	Tube, double-ended
<b>Approval and application</b>	
Energy Saving Product	Yes
Approbation Marks	RoHS compliance UL certificate DLC compliance
Energy Consumption kWh/1000 h	- kWh
<b>Application conditions</b>	
Ambient temperature range	-20 °C to 45 °C

<b>Product data</b>	
Order product name	10.5T8/MAS/48-835/MF16/P 10/1
EAN/UPC - Product	046677557355
Order code	557355
Numerator - Quantity Per Pack	1
Numerator - Packs per outer box	10
Material Nr. (12NC)	929002325104
Net Weight (Piece)	0.265 lb
Model Number	9290023251

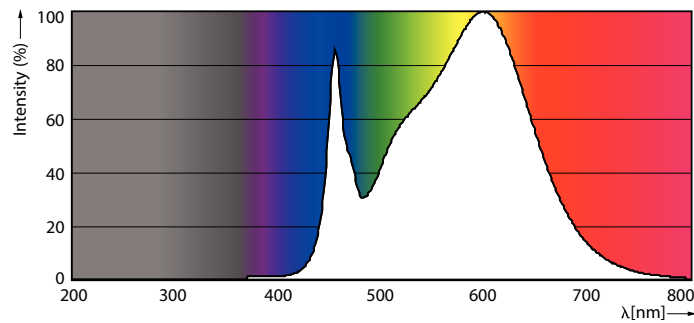
## Dimensional drawing



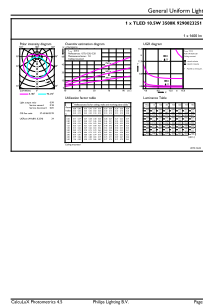
10.5T8/MAS/48-835/MF16/P 10/1

Product	D1	D2	A1	A2	A3
10.5T8/MAS/48-835/MF16/P 10/1	1-1/16 in	1-1/8 in	47-3/16 in	47-1/2 in	47-3/4 in

## Photometric data

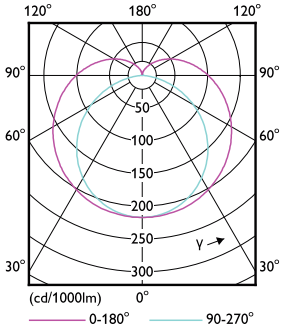


LEDtube\_G13\_835-POC



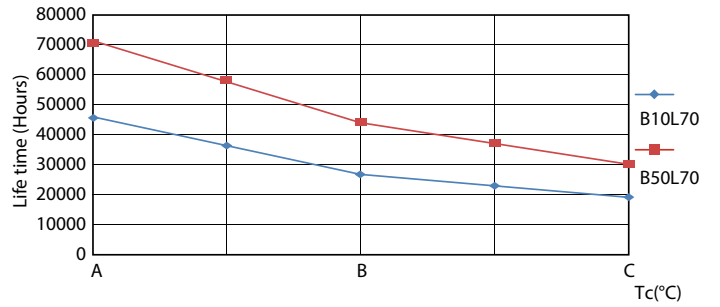
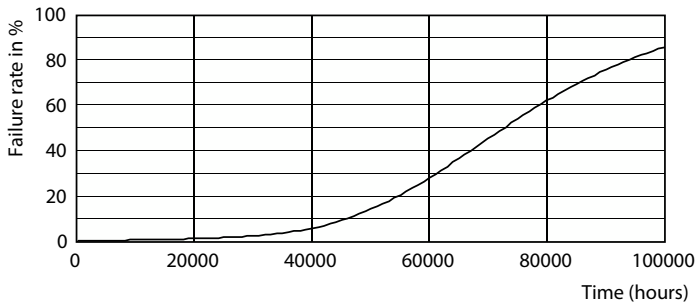
LEDtube\_10.5W\_G13\_835-GUL

Photometric data

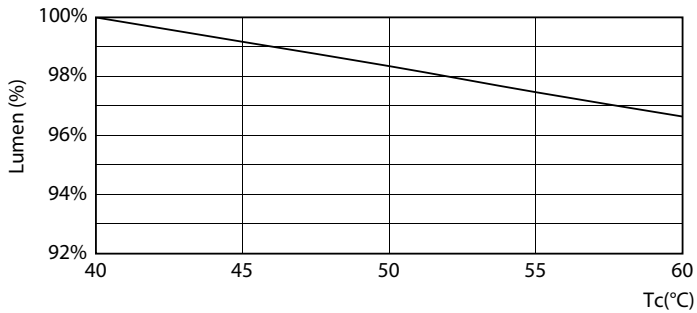


LEDtube\_G13\_1-LDD

Lifetime

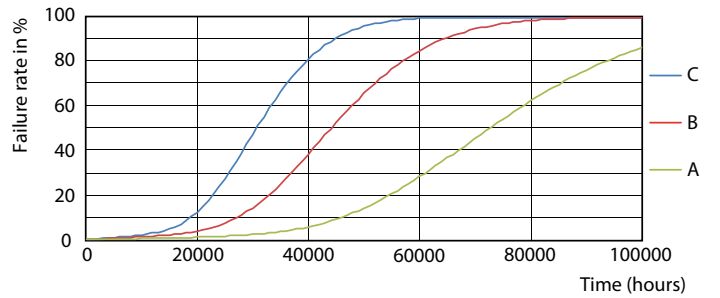


Life Expectancy Diagram



LEDtube\_70K\_LumenVsTc-LMP

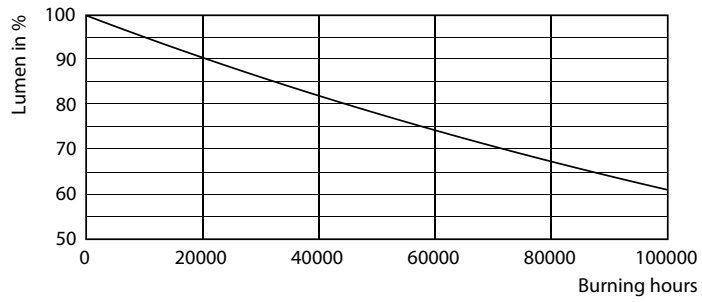
LEDtube\_70K\_LifetimeVsTc-LED



LEDtube\_70K\_FailureRate-LED

# T8

## Lifetime



Lumen Maintenance Diagram

