



# T8

## 10.5T8/MAS/48-850/MF16/P 10/1

Introducing Philips MainsFit (UL Type B) MasterClass T8 LED tubes with industry leading reliability, shatter-prevention and lifetime. The UL Type B LED tubes are designed with easy installation and long-term maintenance simplicity in mind. Upgrade your lighting to MasterClass and realize 70,000 hour LED lifetime backed by a 7-year, full replacement limited warranty.

### Product data

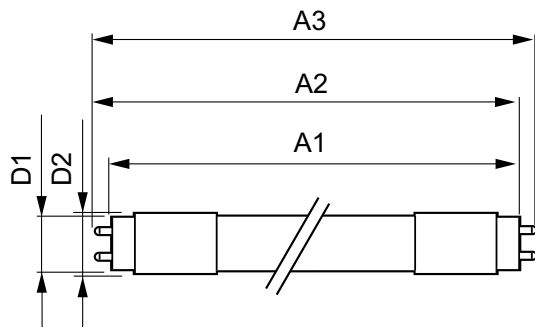
General information		Lamp Current (Max)	
Base	G13 [ Medium Bi-Pin Fluorescent]	Lamp Current (Max)	100 mA
EU RoHS compliant	Yes	Lamp Current (Min)	43 mA
Nominal Lifetime (Nom)	70000 h	Wattage Equivalent	32 W
Switching Cycle	50000X	Starting Time (Nom)	0.5 s
Technical Type	10.5-32W	Warm Up Time to 60% Light (Nom)	0.7 s
Light technical		UL Type	Type B - bypass the ballast
Color Code	850 [ CCT of 5000K]	Power Factor (Nom)	0.9
Beam Angle (Nom)	180 °	Voltage (Nom)	120-277 V
Initial lumen (Nom)	1650 lm	Temperature	
Luminous Flux (Rated) (Nom)	1650 lm	T-Ambient (Max)	45 °C
Color Designation	Daylight	T-Ambient (Min)	-20 °C
Correlated Color Temperature (Nom)	5000 K	T-Storage (Max)	65 °C
Luminous Efficacy (rated) (Nom)	157.00 lm/W	T-Storage (Min)	-40 °C
Color Consistency	<5	T-Case Maximum (Nom)	70 °C
Color Rendering Index (Nom)	80	Controls and dimming	
LLMF At End Of Nominal Lifetime (Nom)	70 %	Dimmable	No
Operating and electrical		Mechanical and housing	
Input Frequency	50 to 60 Hz	Bulb Finish	Frosted
Power (Rated) (Nom)	10.5 W	Bulb Material	Plastic

# T8

Product Length	48 in
Bulb Shape	Tube, double-ended
<b>Approval and application</b>	
Energy Saving Product	Yes
Approbation Marks	RoHS compliance UL certificate DLC compliance
Energy Consumption kWh/1000 h	- kWh
<b>Product data</b>	
Order product name	10.5T8/MAS/48-850/MF16/P 10/1

EAN/UPC - Product	046677557379
Order code	557371
Numerator - Quantity Per Pack	1
Numerator - Packs per outer box	10
Material Nr. (12NC)	929002325304
Net Weight (Piece)	0.120 kg
Model Number	9290023253

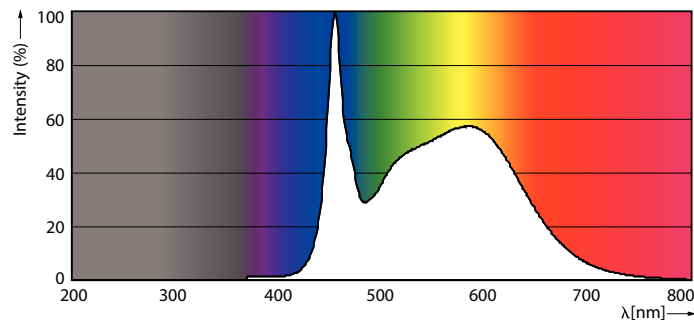
## Dimensional drawing



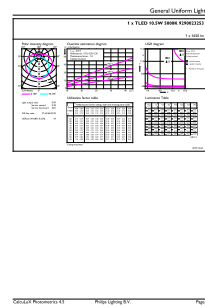
10.5T8/MAS/48-850/MF16/P 10/1

Product	D1	D2	A1	A2	A3
10.5T8/MAS/48-850/MF16/P 10/1	25.7 mm	28 mm	1198 mm	1205 mm	1212 mm

## Photometric data

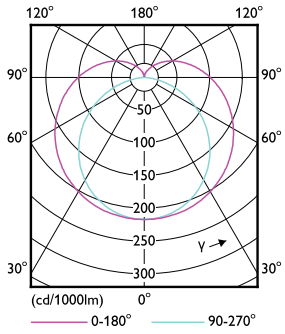


LEDtube\_G13\_850-POC



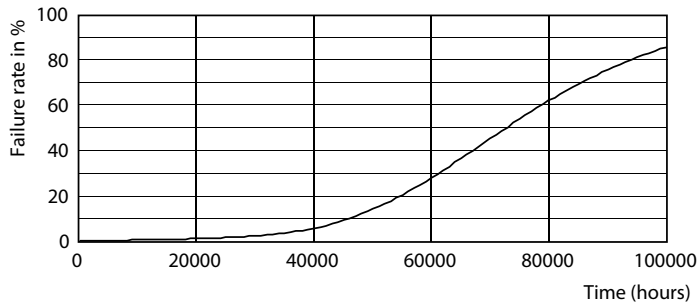
LEDtube\_10.5W\_G13\_850-GUL

Photometric data

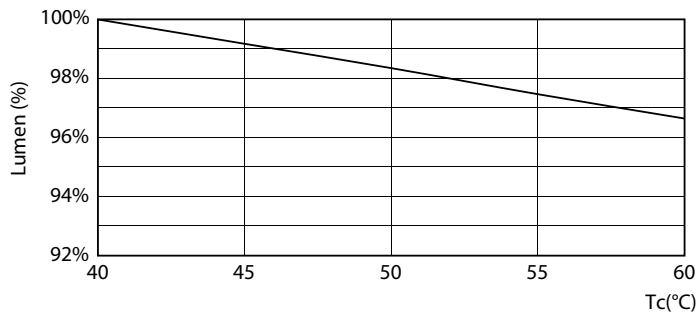


LEDtube\_G13\_1-LDD

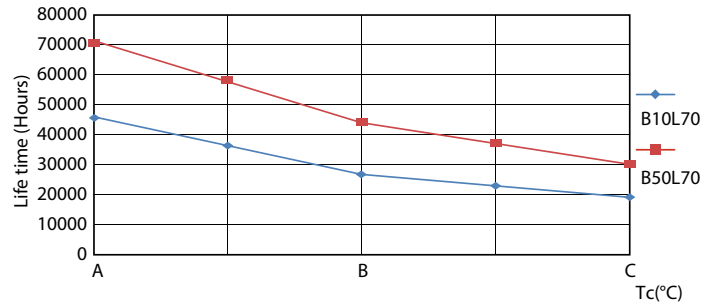
Lifetime



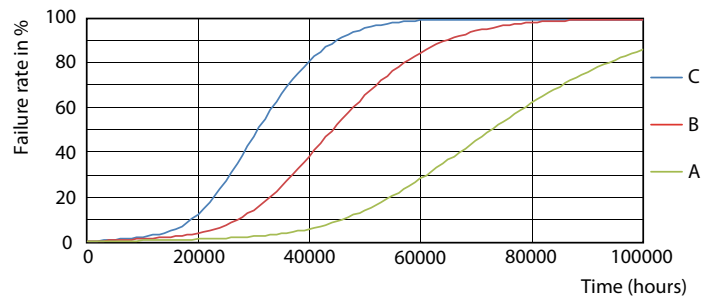
LEDtube\_70K-LED



LEDtube\_70K\_LumenVsTc-LMP



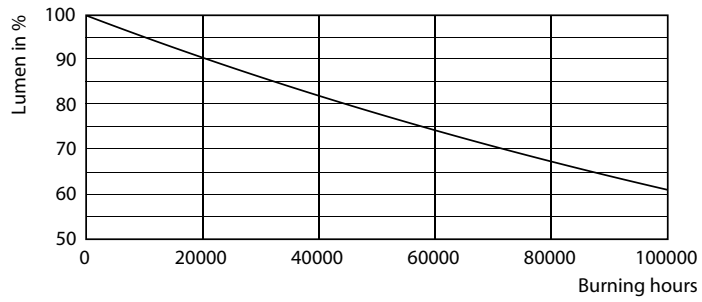
LEDtube\_70K\_LifetimeVsTc-LED



LEDtube\_70K\_FailureRate-LED

# T8

## Lifetime



LEDtube\_70K-LMP

