

T8

12.5T8/COR/48-835/MF17/G 10/1

Our TLEDs are available in InstantFit (Type A / Type C) or MainsFit (Ballast bypass / Type B) versions. The InstantFit lamps work on a broad variety of ballasts and LED drivers. Only InstantFit has over 15,000 lamp & ballast combinations delivering even light output, energy savings and a long lifetime. Our MainsFit products feature a double-ended design, simplifying installation while a proprietary safety circuit minimizes a shock risk. Lamp sizes range from 2-foot to 8-foot and U-bend with a variety of lumen outputs.

Product data

General Information		Input Frequency	
Cap-Base	G13 [Medium Bi-Pin Fluorescent]	Power Consumption	12.5 W
Nominal lifetime	50,000 hour(s)	Lamp Current (Max)	105 mA
Switching Cycle	50,000	Lamp Current (Min)	45 mA
Lighting Technology	LED	Wattage Equivalent	32 W
EU RoHS compliant	Yes	Starting Time (Nom)	0.5 s
Light Technical		Warm-up time to 60% light	0.5 s
Color Code	835 [CCT of 3500K]	Power Factor (Fraction)	0.9
Beam Angle (Nom)	240 degree(s)	Voltage (Nom)	120-277 V
Luminous Flux	1,700 lm	UL Type	Type B - bypass the ballast
Color Designation	White (WH)	Temperature	
Correlated Color Temperature (Nom)	3500 K	Ambient temperature range	-4 °F to 113 °F
Luminous Efficacy (rated) (Nom)	136.00 lm/W	T-Case Maximum (Nom)	140 °F
Color Consistency	<6	Controls and Dimming	
Color rendering index (CRI)	82	Dimmable	No
LLMF At End Of Nominal Lifetime (Nom)	70 %	Mechanical and Housing	
Operating and Electrical		Bulb Finish	Frosted
Line Frequency	50 to 60 Hz		

Bulb Material	Glass
Product Length	47-1/4 inch
Bulb Shape	T8

Approval and Application

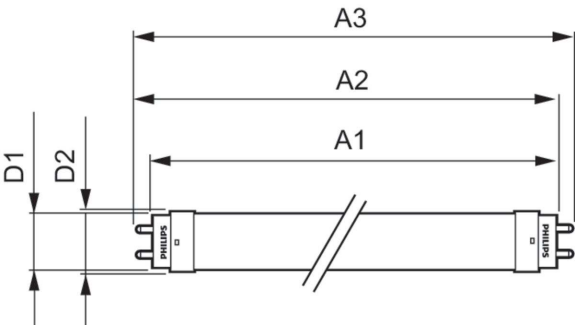
Energy Saving Product	Yes
Approval Marks	RoHS compliance UL certificate DLC compliance
Energy Consumption kWh/1000 h	- kWh

Product Data

Order product name	12.5T8/COR/48-835/MF17/G 10/1
--------------------	-------------------------------

Full product name	12.5T8/COR/48-835/MF17/G 10/1
Order code	477323
Material Nr. (12NC)	929002394504
Numerator - Quantity Per Pack	1
EAN/UPC - Product/Case	046677477325
Numerator - Packs per outer box	10
EAN/UPC - Case	50046677477320

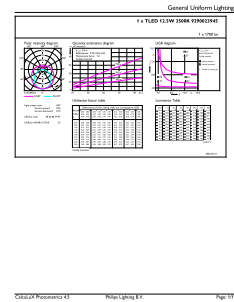
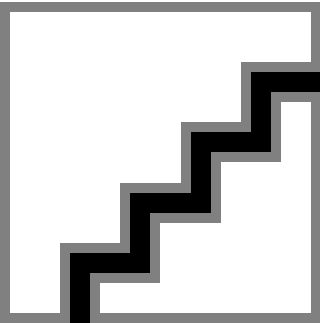
Dimensional drawing



Product

12.5T8/COR/48-835/MF17/G 10/1

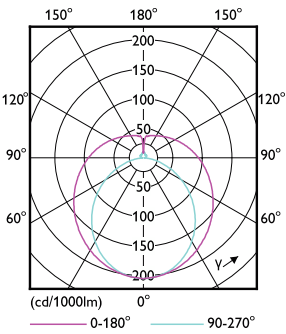
Photometric data



Spectral Power Distribution Colour - 12.5T8/COR/48-835/MF17/G 10/1

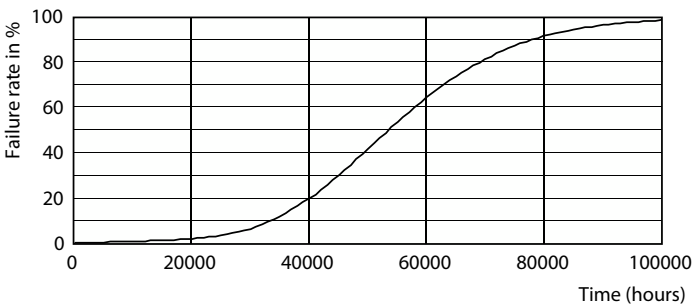
General uniform lighting - 12.5T8/COR/48-835/MF17/G 10/1

Photometric data

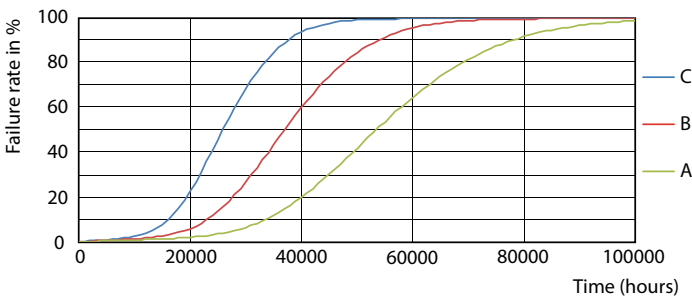


Light Distribution Diagram - 12.5T8/COR/48-835/MF17/G 10/1

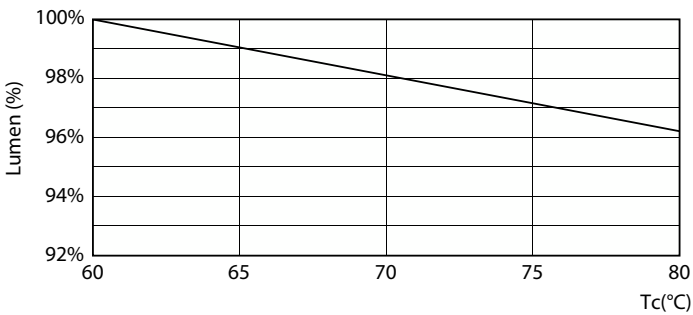
Lifetime



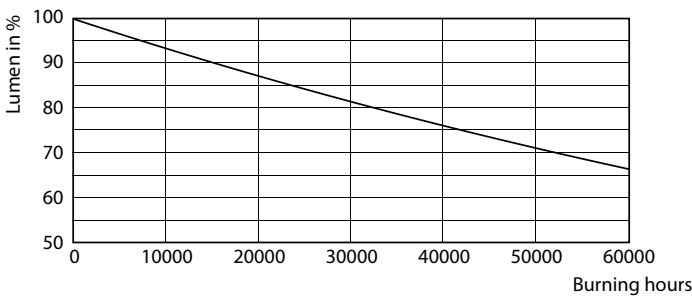
Life Expectancy Diagram - 12.5T8/COR/48-835/MF17/G 10/1



Life Expectancy Diagram - 12.5T8/COR/48-835/MF17/G 10/1

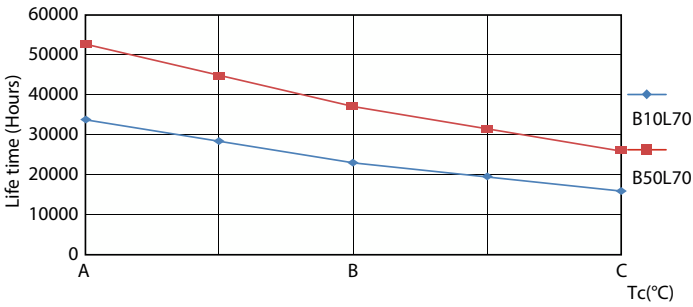


Lumen Maintenance Diagram - 12.5T8/COR/48-835/MF17/G 10/1



Lumen Maintenance Diagram - 12.5T8/COR/48-835/MF17/G 10/1

Lifetime



Life Expectancy Diagram - 12.5T8/COR/48-835/MF17/G 10/1

