

T8

15T8/COR/48-840/MF21/G 10/1

Our TLEDs are available in InstantFit (Type A / Type C) or MainsFit (Ballast bypass / Type B) versions. The InstantFit lamps work on a broad variety of ballasts and LED drivers. Only InstantFit has over 15,000 lamp & ballast combinations delivering even light output, energy savings and a long lifetime. Our MainsFit products feature a double-ended design, simplifying installation while a proprietary safety circuit minimizes a shock risk. Lamp sizes range from 2-foot to 8-foot and U-bend with a variety of lumen outputs.

Product data

General Information		Input Frequency	
Cap-Base	G13 [Medium Bi-Pin Fluorescent]	Power Consumption	15 W
Nominal lifetime	50,000 hour(s)	Lamp Current (Max)	125 mA
Switching Cycle	50,000	Lamp Current (Min)	55 mA
Lighting Technology	LED	Wattage Equivalent	32 W
EU RoHS compliant	Yes	Starting Time (Nom)	0.5 s
Light Technical		Warm-up time to 60% light	0.5 s
Color Code	840 [CCT of 4000K]	Power Factor (Fraction)	0.9
Beam Angle (Nom)	240 degree(s)	Voltage (Nom)	120-277 V
Luminous Flux	2,100 lm	UL Type	Type B - bypass the ballast
Color Designation	Cool White (CW)	Temperature	
Correlated Color Temperature (Nom)	4000 K	Ambient temperature range	-4 °F to 113 °F
Luminous Efficacy (rated) (Nom)	140.00 lm/W	T-Case Maximum (Nom)	158 °F
Color Consistency	<6	Controls and Dimming	
Color rendering index (CRI)	82	Dimmable	No
LLMF At End Of Nominal Lifetime (Nom)	70 %	Mechanical and Housing	
Operating and Electrical		Bulb Finish	Frosted
Line Frequency	50 to 60 Hz		

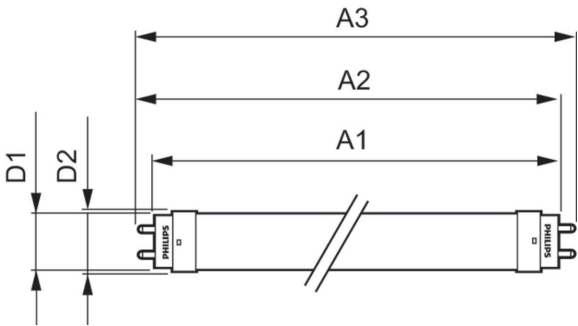
Bulb Material	Glass
Product Length	47-1/4 inch
Bulb Shape	T8
Approval and Application	
Energy Saving Product	Yes
Approval Marks	RoHS compliance UL certificate DLC compliance
Energy Consumption kWh/1000 h	- kWh

Product Data

Order product name	15T8/COR/48-840/MF21/G 10/1
--------------------	-----------------------------

Full product name	15T8/COR/48-840/MF21/G 10/1
Order code	471763
Material Nr. (12NC)	929002395004
Numerator - Quantity Per Pack	1
EAN/UPC - Product/Case	046677471767
Numerator - Packs per outer box	10
EAN/UPC - Case	50046677471762

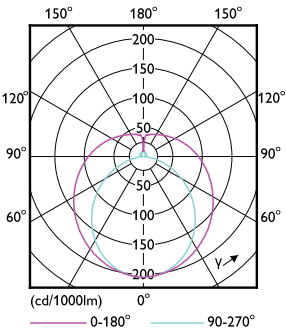
Dimensional drawing



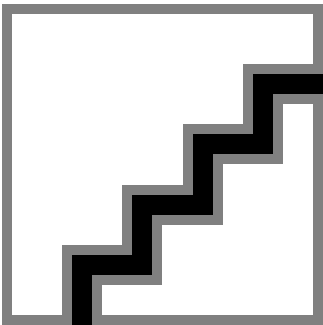
Product

15T8/COR/48-840/MF21/G 10/1

Photometric data

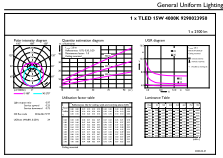


Light Distribution Diagram - 15T8/COR/48-840/MF21/G 10/1



Spectral Power Distribution Colour - 15T8/COR/48-840/MF21/G 10/1

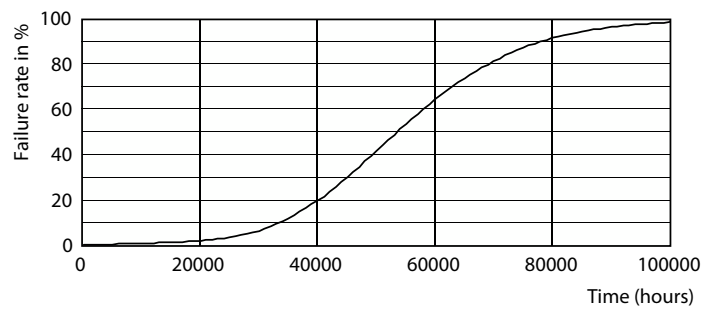
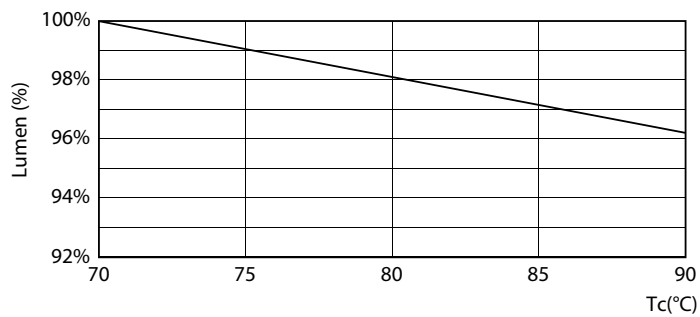
Photometric data



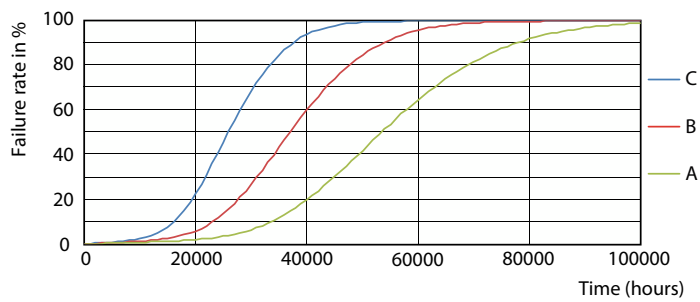
CalcLab Photometrics 4.5 Philips Lighting B.V. Page: 5/5

General uniform lighting - 15T8/COR/48-840/MF21/G 10/1

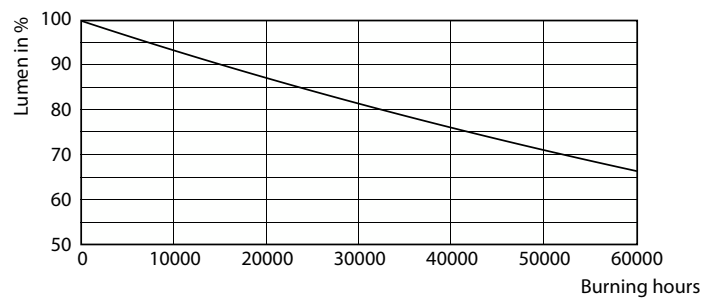
Lifetime



Lumen Maintenance Diagram - 15T8/COR/48-840/MF21/G 10/1



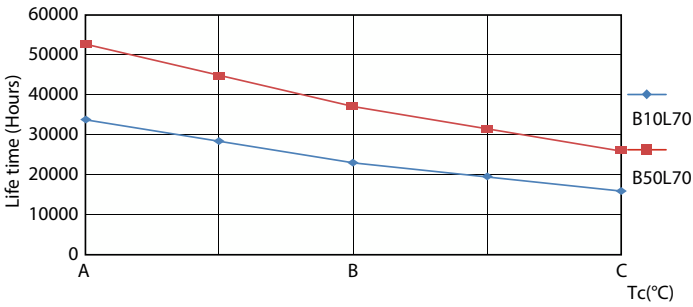
Life Expectancy Diagram - 15T8/COR/48-840/MF21/G 10/1



Life Expectancy Diagram - 15T8/COR/48-840/MF21/G 10/1

Lumen Maintenance Diagram - 15T8/COR/48-840/MF21/G 10/1

Lifetime



Life Expectancy Diagram - 15T8/COR/48-840/MF21/G 10/1

