



Corepro InstantFit (UL Type-A) T8

14T8/COR/48-850/IF21/G/DIM 10/1

The CorePro InstantFit LED lamps provide hassle-free installation with simple lamp-for-lamp replacements. They deliver what we promise, with at least 40% energy savings, flicker-free performance, and the life you would expect. Other lamps claim compatibility but only CorePro InstantFit (UL Type A) has been proven to work with over 200 ballasts and drivers, delivering even light output, with proven energy savings and a long average lifetime. End users will be delighted being under these comfortable and high quality CorePro InstantFit lamps with no visible flicker and optimized optics. Energy managers will enjoy these lamps too as they can count the savings delivered by our lamps. To enjoy more energy savings, the CorePro InstantFit lamps can be paired with the Advance TLED drivers to create a Type C system.

Product data

General Information		Color Consistency	
Cap-Base	G13 [Medium Bi-Pin Fluorescent]	Color Consistency	<5
Nominal lifetime	70,000 hour(s)	Color rendering index (CRI)	82
Switching Cycle	50,000	LLMF At End Of Nominal Lifetime (Nom)	70 %
Lighting Technology	LED	Operating and Electrical	
EU RoHS compliant	Yes	Line Frequency	25000-105000 Hz
Light Technical		Input Frequency	25000-105000 Hz
Color Code	850 [CCT of 5000K]	Power Consumption	14 W
Beam Angle (Nom)	240 degree(s)	Lamp Current (Max)	260 mA
Luminous Flux	2,100 lm	Lamp Current (Min)	100 mA
Color Designation	Daylight	Wattage Equivalent	32 W
Correlated Color Temperature (Nom)	5000 K	Starting Time (Nom)	0.5 s
Luminous Efficacy (rated) (Nom)	150.00 lm/W	Warm-up time to 60% light	0.5 s
		Power Factor (Fraction)	0.9

Corepro InstantFit (UL Type-A) T8

Voltage (Nom)	120-277, 347 V
UL Type	UL Type A

Temperature

Ambient temperature range	-4 °F to 113 °F
T-Case Maximum (Nom)	122 °F

Controls and Dimming

Dimmable	Yes
----------	-----

Mechanical and Housing

Bulb Finish	Frosted
Bulb Material	Glass
Product Length	47-1/4 inch
Bulb Shape	T8

Approval and Application

Energy Saving Product	Yes
Approval Marks	UL certificate RoHS compliance DLC compliance

Energy Consumption kWh/1000 h	- kWh
Energy Certifications	DLC Standard

Application Conditions

can it be used in closed luminaires	Yes
-------------------------------------	-----

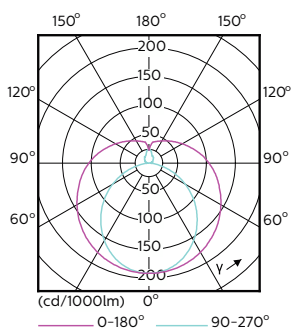
Product Data

Order product name	14T8/COR/48-850/IF21/G/DIM 10/1
Full product name	14T8/COR/48-850/IF21/G/DIM 10/1
Order code	470120
Material Nr. (12NC)	929001343334
Numerator - Quantity Per Pack	1
EAN/UPC - Product/Case	046677452483
Numerator - Packs per outer box	10
EAN/UPC - Case	50046677470123

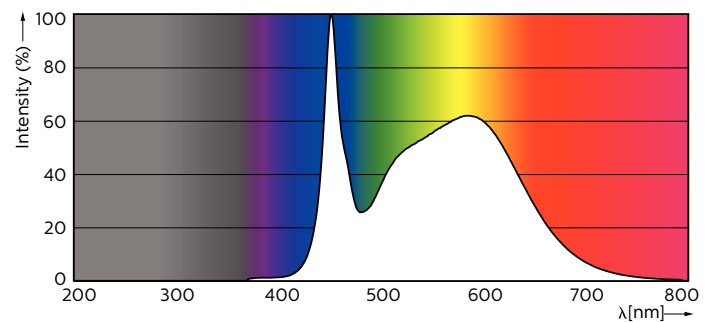
Dimensional drawing

Product	D1	D2	A1	A2	A3
14T8/COR/48-850/IF21/G/DIM 10/1	1-1/16 inch	1-1/8 inch	47-3/16 inch	47-1/2 inch	47-3/4 inch

Photometric data



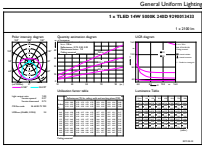
Light Distribution Diagram - 14T8/COR/48-850/IF21/G/DIM 10/1



Spectral Power Distribution Colour - 14T8/COR/48-850/IF21/G/DIM 10/1

Corepro InstantFit (UL Type-A) T8

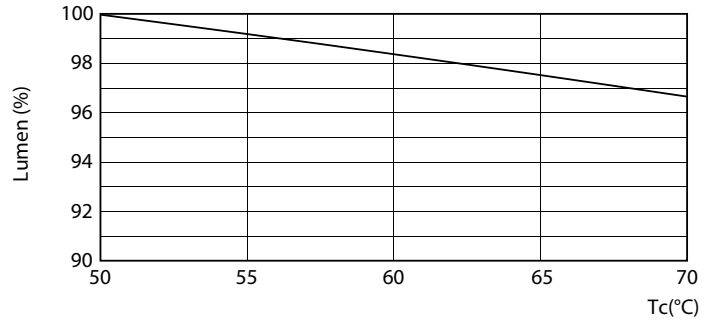
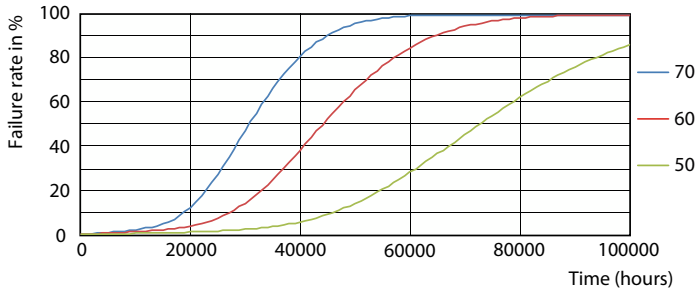
Photometric data



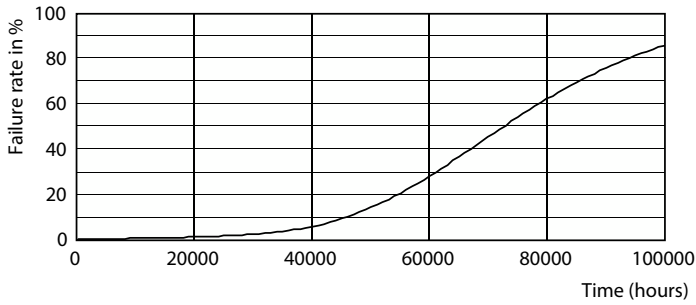
General Parameters 41 Photo Lighting 8.1 Page 17

General uniform lighting - 14T8/COR/48-850/IF21/G/DIM 10/1

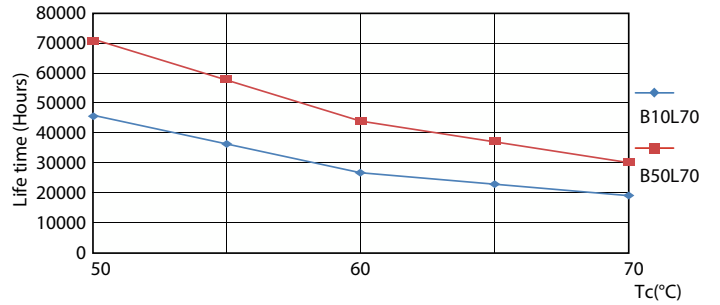
Lifetime



Life Expectancy Diagram - 14T8/COR/48-850/IF21/G/DIM 10/1



Lumen Maintenance Diagram - 14T8/COR/48-850/IF21/G/DIM 10/1



Life Expectancy Diagram - 14T8/COR/48-850/IF21/G/DIM 10/1

Life Expectancy Diagram - 14T8/COR/48-850/IF21/G/DIM 10/1

Corepro InstantFit (UL Type-A) T8

Lifetime



Lumen Maintenance Diagram - 14T8/COR/48-850/IF21/G/DIM 10/1

