



# PL-C/T

## 5PL-C/LED/13H/835/IF5/P/2P 20/1

The CorePro LED Type A - Ballast Driven (Plug and Play) InstantFit CFL-ni is a great LED solution suitable for replacing 2-pin CFL fluorescent lamps, using an existing ballast. This lamp is meant to be used in a horizontal position and can be aimed using the rotatable base.

### Product data

General Information	
Base	GX23-2 [ GX23-2]
EU RoHS compliant	Yes
Nominal Lifetime (Nom)	50000 h
Switching Cycle	50000X
Light Technical	
Color Code	835 [ CCT of 3500K]
Beam Angle (Nom)	150 °
Initial lumen (Nom)	550 lm
Color Designation	White (WH)
Correlated Color Temperature (Nom)	3500 K
Luminous Efficacy (rated) (Nom)	110.00 lm/W
Color Consistency	<6
Color Rendering Index (Nom)	82
LLMF At End Of Nominal Lifetime (Nom)	70 %
Operating and Electrical	
Input Frequency	50 to 60 Hz
Power (Rated) (Nom)	5 W
Lamp Current (Max)	50 mA
Lamp Current (Min)	15 mA
Starting Time (Nom)	0.5 s

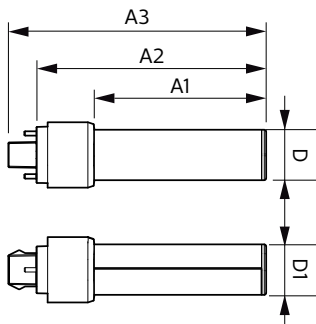
Warm Up Time to 60% Light (Nom)	0.5 s
UL Type	Type A - works on ballast
Power Factor (Nom)	0.9
Voltage (Nom)	120-277 V
Temperature	
T-Ambient (Max)	45 °C
T-Ambient (Min)	-20 °C
T-Storage (Max)	65 °C
T-Storage (Min)	-40 °C
T-Case Maximum (Nom)	70 °C
Controls and Dimming	
Dimmable	No
Mechanical and Housing	
Product Length	5.5 in
Approval and Application	
Energy Efficiency Label (EEL)	Not applicable
Energy Saving Product	Yes
Approbation Marks	UL certificate RoHS compliance

# PL-C/T

Energy Consumption kWh/1000 h	- kWh
<b>Product Data</b>	
Order product name	5PL-C/LED/13H/835/IF5/P/2P 20/1
EAN/UPC - Product	046677532338
Order code	532333
Numerator - Quantity Per Pack	1

Numerator - Packs per outer box	20
Material Nr. (12NC)	929001884704
Net Weight (Piece)	0.064 kg
Model Number	9290018847

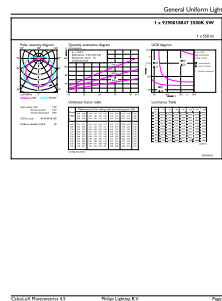
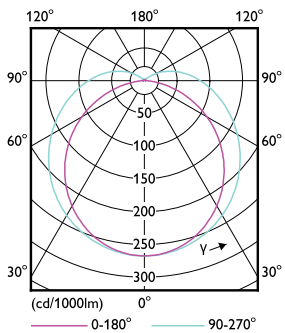
## Dimensional drawing



PLED PLC-H 5-13W 580lm 3500K G24d

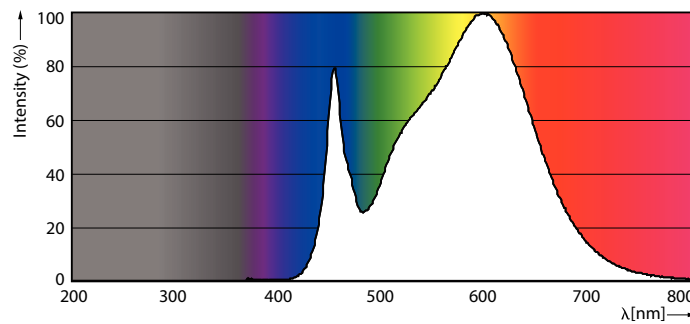
Product	D	D1	A1	A2	A3
5PL-C/LED/13H/835/IF5/P/2P 20/1	27 mm	27 mm	91.5 mm	122.4 mm	137.4 mm

## Photometric data



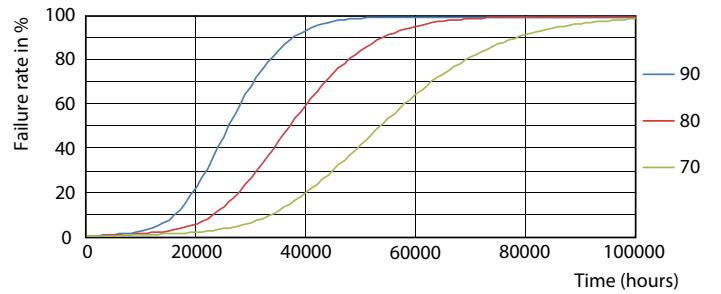
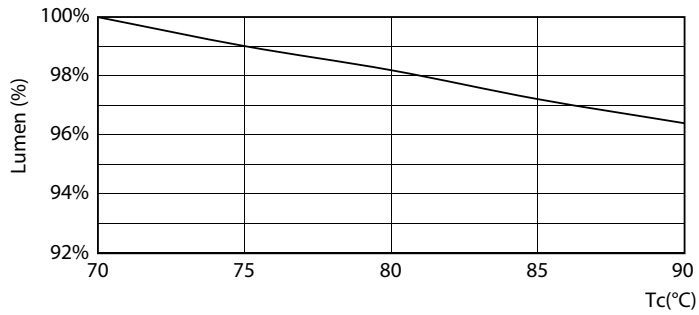
LEDtube PLC 13H 5W GX23-2 827 15D ND

LEDtube PLC 13H 5W GX23-2 835 15D ND



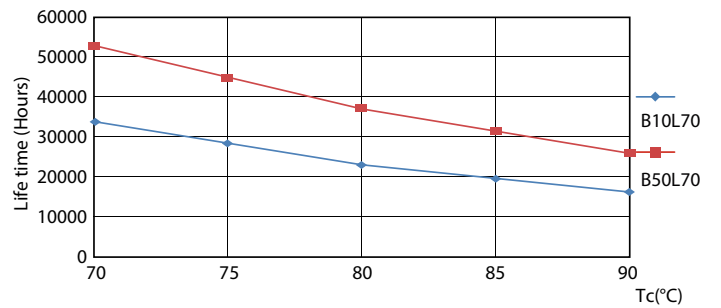
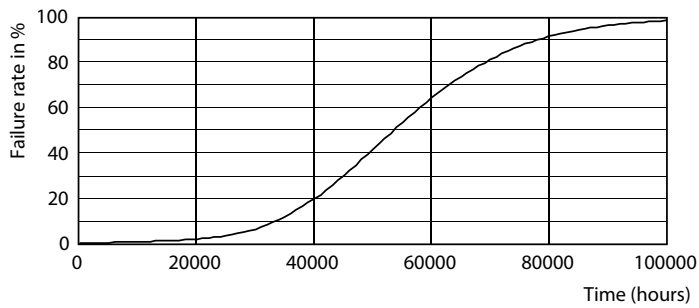
LEDtube PLC 13H 5W GX23-2 835 15D ND

Lifetime



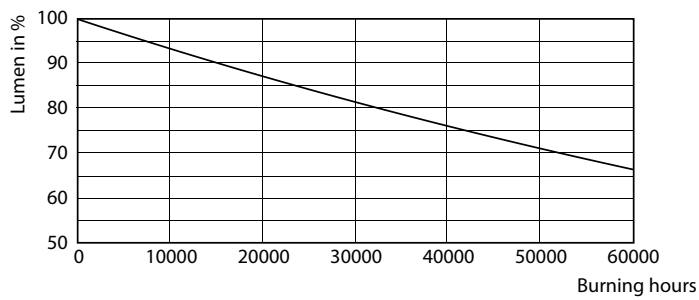
LEDtube PLC 13H 5W GX23-2 827 15D ND

LEDtube PLC 13H 5W GX23-2 827 15D ND



LEDtube PLC 13H 5W GX23-2 827 15D ND

LEDtube PLC 13H 5W GX23-2 827 15D ND



LEDtube PLC 13H 5W GX23-2 827 15D ND

