

# T8

## 30T8/COR/96-830/IF39/G/FA8 10/1

Our TLEDs are available in InstantFit (Type A / Type C) or MainsFit (Ballast bypass / Type B) versions. The InstantFit lamps work on a broad variety of ballasts and LED drivers. Only InstantFit has over 15,000 lamp & ballast combinations delivering even light output, energy savings and a long lifetime. Our MainsFit products feature a double-ended design, simplifying installation while a proprietary safety circuit minimizes a shock risk. Lamp sizes range from 2-foot to 8-foot and U-bend with a variety of lumen outputs.

### Product data

General Information			
Cap-Base	FA8 [FA8]	Input Frequency	35000-150000 Hz
Nominal lifetime	50,000 hour(s)	Power Consumption	30 W
Switching Cycle	50,000	Lamp Current (Max)	350 mA
Lighting Technology	LED	Lamp Current (Min)	100 mA
EU RoHS compliant	Yes	Starting Time (Nom)	0.5 s
		Warm-up time to 60% light	0.5 s
		Power Factor (Fraction)	0.9
		Voltage (Nom)	200-500 V
		UL Type	Type A - works on ballast
Light Technical		Temperature	
Color Code	830 [CCT of 3000K]	Ambient temperature range	-4 °F to 113 °F
Beam Angle (Nom)	240 degree(s)	T-Case Maximum (Nom)	113 °F
Luminous Flux	3,950 lm		
Color Designation	White (WH)	Controls and Dimming	
Correlated Color Temperature (Nom)	3000 K	Dimmable	No
Luminous Efficacy (rated) (Nom)	131.00 lm/W		
Color Consistency	ANSI	Mechanical and Housing	
Color rendering index (CRI)	80	Bulb Material	Glass
LLMF At End Of Nominal Lifetime (Nom)	70 %	Product Length	94-1/2 inch
Operating and Electrical			
Line Frequency	35000-150000 Hz		

# T8

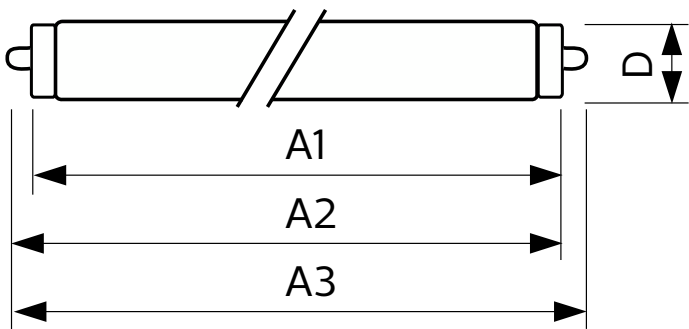
Bulb Shape	T8
<b>Approval and Application</b>	
Energy Saving Product	Yes
Approval Marks	UL certificate RoHS compliance
Energy Consumption kWh/1000 h	- kWh
Energy Certifications	DLC Standard

## Product Data

Order product name	30T8/COR/96-830/IF39/G/FA8 10/1
--------------------	---------------------------------

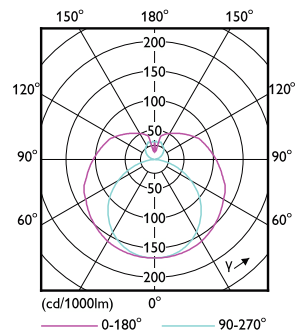
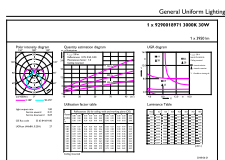
Full product name	30T8/COR/96-830/IF39/G/FA8 10/1
Order code	533000
Material Nr. (12NC)	929001897104
Numerator - Quantity Per Pack	1
EAN/UPC - Product/Case	046677533007
Numerator - Packs per outer box	10
EAN/UPC - Case	50046677533002

## Dimensional drawing



Product	D1	D2	A1	A2	A3
30T8/COR/96-830/IF39/G/FA8 10/1	1-1/16 inch	1-1/8 inch	93-3/16 inch	93-9/16 inch	93-15/16 inch

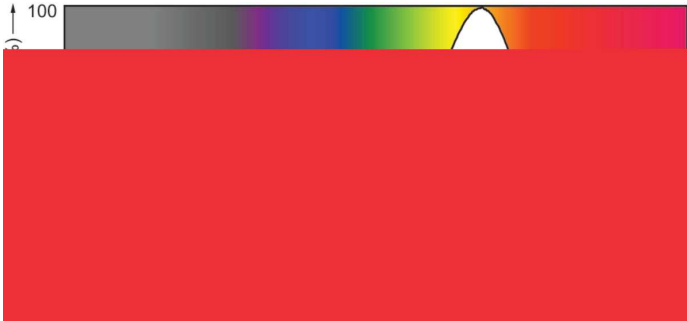
## Photometric data



General uniform lighting - 30T8/COR/96-830/IF39/G/FA8 10/1

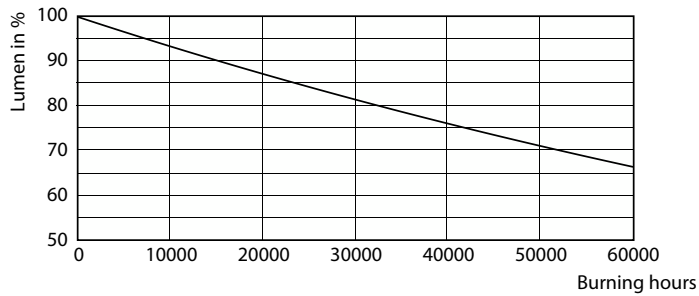
Light Distribution Diagram - 30T8/COR/96-830/IF39/G/FA8 10/1

Photometric data

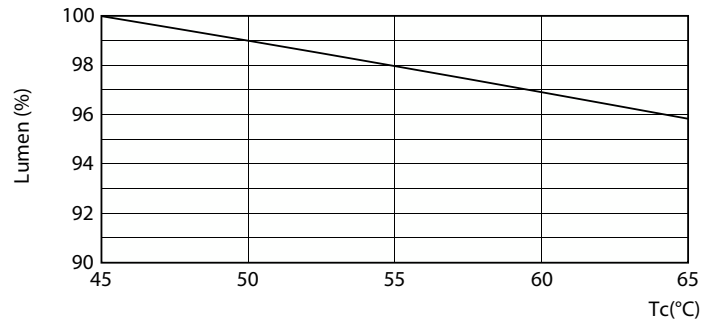


Spectral Power Distribution Colour - 30T8/COR/96-830/IF39/G/FA8 10/1

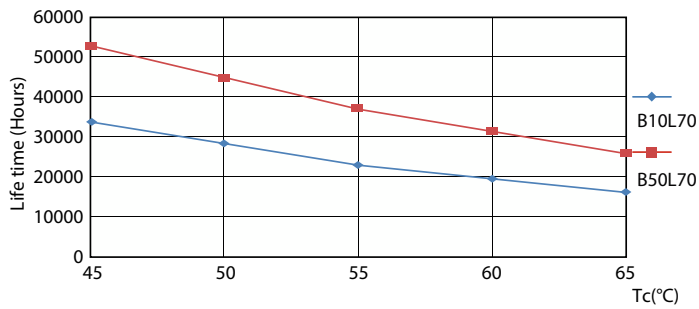
Lifetime



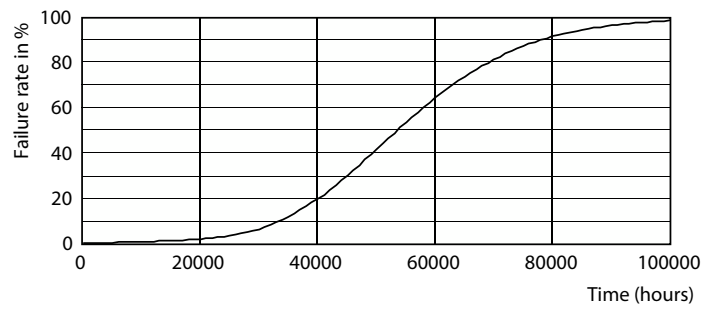
Lumen Maintenance Diagram - 30T8/COR/96-830/IF39/G/FA8 10/1



Lumen Maintenance Diagram - 30T8/COR/96-830/IF39/G/FA8 10/1



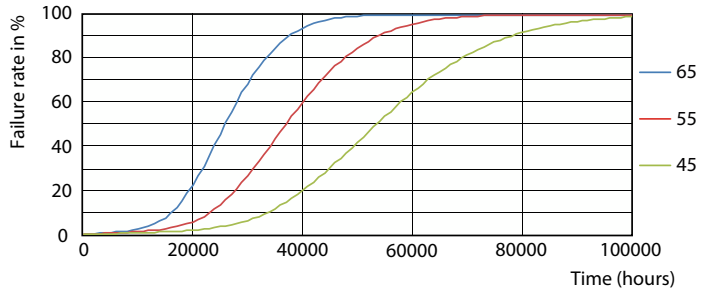
Life Expectancy Diagram - 30T8/COR/96-830/IF39/G/FA8 10/1



Life Expectancy Diagram - 30T8/COR/96-830/IF39/G/FA8 10/1

# T8

## Lifetime



Life Expectancy Diagram - 30T8/COR/96-830/IF39/G/FA8 10/1

