

Corepro InstantFit (UL Type-A) T8

30T8/COR/96-840/IF42/G/FA8 10/1

The CorePro InstantFit LED lamps provide hassle-free installation with simple lamp-for-lamp replacements. They deliver what we promise, with at least 40% energy savings, flicker-free performance, and the life you would expect. Other lamps claim compatibility but only CorePro InstantFit (UL Type A) has been proven to work with over 200 ballasts and drivers, delivering even light output, with proven energy savings and a long average lifetime. End users will be delighted being under these comfortable and high quality CorePro InstantFit lamps with no visible flicker and optimized optics. Energy managers will enjoy these lamps too as they can count the savings delivered by our lamps. To enjoy more energy savings, the CorePro InstantFit lamps can be paired with the Advance TLED drivers to create a Type C system.

Product data

General Information		Color Consistency	
Cap-Base	FA8 [FA8]	Color rendering index (CRI)	ANSI 80
Nominal lifetime	50,000 hour(s)	LLMF At End Of Nominal Lifetime (Nom)	70 %
Switching Cycle	50,000		
Lighting Technology	LED		
EU RoHS compliant	Yes		
Light Technical		Operating and Electrical	
Color Code	840 [CCT of 4000K]	Line Frequency	35000-150000 Hz
Beam Angle (Nom)	240 degree(s)	Input Frequency	35000-150000 Hz
Luminous Flux	4,200 lm	Power Consumption	30 W
Color Designation	Cool White (CW)	Lamp Current (Max)	350 mA
Correlated Color Temperature (Nom)	4000 K	Lamp Current (Min)	100 mA
Luminous Efficacy (rated) (Nom)	140.00 lm/W	Wattage Equivalent	60 W
		Starting Time (Nom)	0.5 s
		Warm-up time to 60% light	0.5 s
		Power Factor (Fraction)	0.9

Corepro InstantFit (UL Type-A) T8

Voltage (Nom)	200-500 V
UL Type	UL Type A
Temperature	
Ambient temperature range	-4 °F to 113 °F
T-Case Maximum (Nom)	113 °F
Controls and Dimming	
Dimmable	No
Mechanical and Housing	
Bulb Finish	Frosted
Bulb Material	Glass
Product Length	94-1/2 inch
Bulb Shape	T8
Approval and Application	
Energy Saving Product	Yes

Approval Marks	UL certificate RoHS compliance
Energy Consumption kWh/1000 h	- kWh
Energy Certifications	DLC Standard

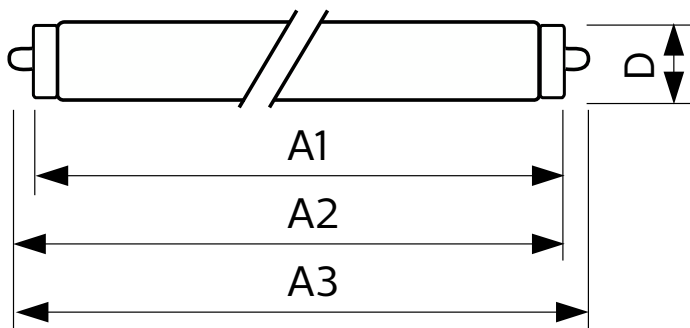
Application Conditions

can it be used in closed luminaires	Yes
-------------------------------------	-----

Product Data

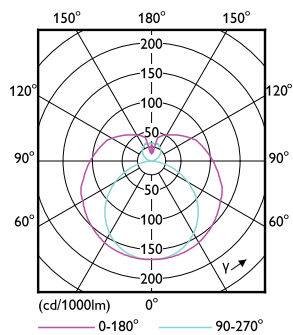
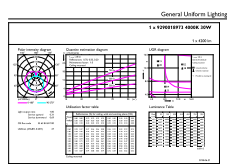
Order product name	30T8/COR/96-840/IF42/G/FA8 10/1
Full product name	30T8/COR/96-840/IF42/G/FA8 10/1
Order code	533026
Material Nr. (12NC)	929001897304
Numerator - Quantity Per Pack	1
EAN/UPC - Product/Case	046677533021
Numerator - Packs per outer box	10
EAN/UPC - Case	50046677533026

Dimensional drawing



Product	D1	D2	A1	A2	A3
30T8/COR/96-840/IF42/G/FA8 10/1	1-1/16 inch	1-1/8 inch	93-3/16 inch	93-9/16 inch	93-15/16 inch

Photometric data

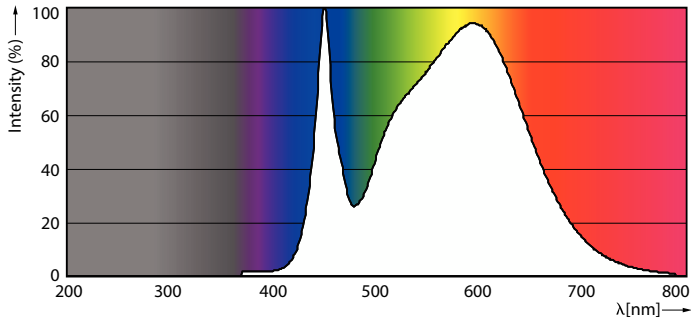


General uniform lighting - 30T8/COR/96-840/IF42/G/FA8 10/1

Light Distribution Diagram - 30T8/COR/96-840/IF42/G/FA8 10/1

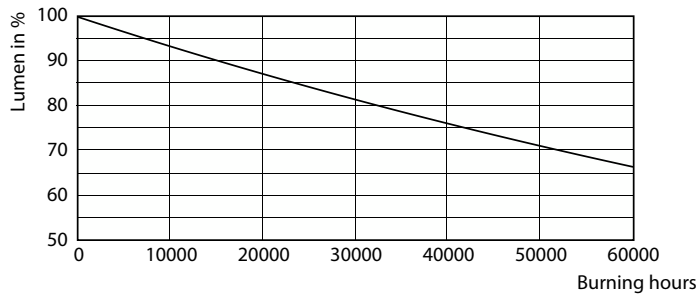
Corepro InstantFit (UL Type-A) T8

Photometric data

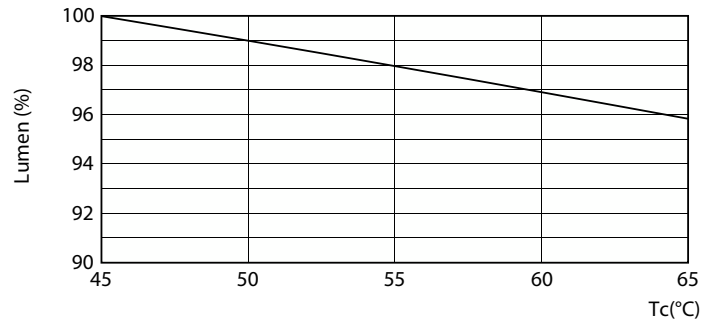


Spectral Power Distribution Colour - 30T8/COR/96-840/IF42/G/FA8 10/1

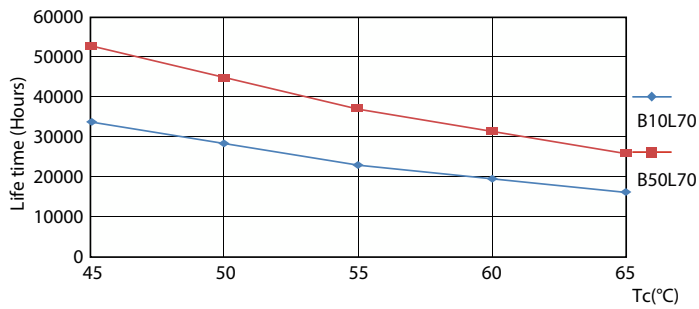
Lifetime



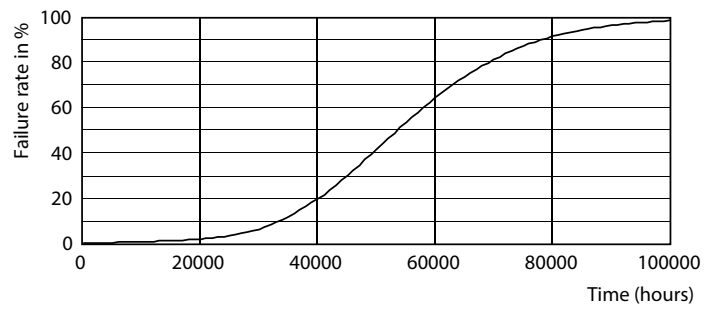
Lumen Maintenance Diagram - 30T8/COR/96-840/IF42/G/FA8 10/1



Lumen Maintenance Diagram - 30T8/COR/96-840/IF42/G/FA8 10/1



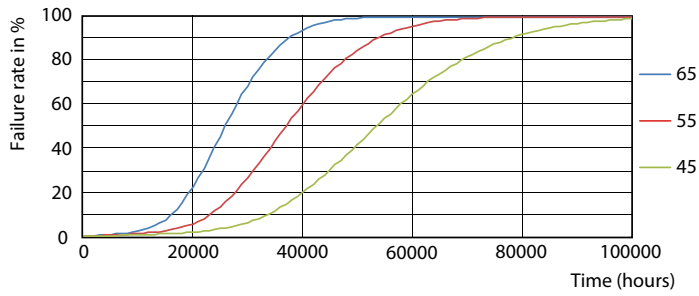
Life Expectancy Diagram - 30T8/COR/96-840/IF42/G/FA8 10/1



Life Expectancy Diagram - 30T8/COR/96-840/IF42/G/FA8 10/1

Corepro InstantFit (UL Type-A) T8

Lifetime



Life Expectancy Diagram - 30T8/COR/96-840/IF42/G/FA8 10/1

