



T8

10T8/COR/48-835/IF15/G/DIM 10/1

Our TLEDs are available in InstantFit (Type A / Type C) or MainsFit (Ballast bypass / Type B) versions. The InstantFit lamps work on a broad variety of ballasts and LED drivers. Only InstantFit has over 15,000 lamp & ballast combinations delivering even light output, energy savings and a long lifetime. Our MainsFit products feature a double-ended design, simplifying installation while a proprietary safety circuit minimizes a shock risk. Lamp sizes range from 2-foot to 8-foot and U-bend with a variety of lumen outputs.

Product data

General Information	
Base	G13 [Medium Bi-Pin Fluorescent]
EU RoHS compliant	Yes
Nominal Lifetime (Nom)	50000 h
Switching Cycle	50000X
Light Technical	
Color Code	835 [CCT of 3500K]
Beam Angle (Nom)	240 °
Initial lumen (Nom)	1500 lm
Color Designation	White (WH)
Correlated Color Temperature (Nom)	3500 K
Luminous Efficacy (rated) (Nom)	160.00 lm/W
Color Consistency	<6
Color Rendering Index (Nom)	82
LLMF At End Of Nominal Lifetime (Nom)	70 %
Operating and Electrical	
Input Frequency	25000-105000 Hz
Power (Rated) (Nom)	10 W

Lamp Current (Max)	260 mA
Lamp Current (Min)	100 mA
Starting Time (Nom)	0.5 s
Warm Up Time to 60% Light (Nom)	0.5 s
UL Type	Type A - works on ballast Type C - works with dedicated LED driver Type A+C - works with both ballasts and the LED driver
Power Factor (Nom)	0.9
Voltage (Nom)	120-277, 347 V
Temperature	
T-Ambient (Max)	45 °C
T-Ambient (Min)	-20 °C
T-Storage (Max)	65 °C
T-Storage (Min)	-40 °C
T-Case Maximum (Nom)	50 °C
Controls and Dimming	
Dimmable	Yes

T8

Mechanical and Housing

Product Length 48 in

Approval and Application

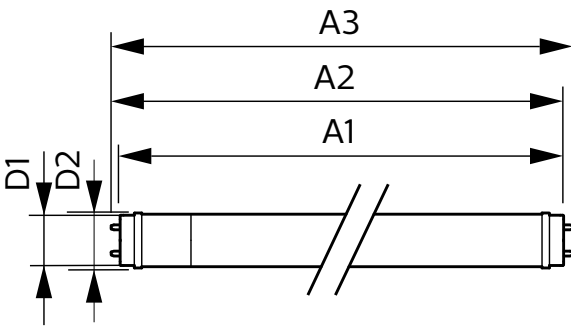
Energy Efficiency Label (EEL) Not applicable
 Energy Saving Product Yes
 Approbation Marks DLC compliance
 Approbation Marks RoHS compliance UL certificate
 Energy Consumption kWh/1000 h - kWh

Product Data

Order product name 10T8/COR/48-835/IF15/G/DIM 10/1

EAN/UPC - Product 046677553227
 Order code 553222
 Numerator - Quantity Per Pack 1
 Numerator - Packs per outer box 10
 Material Nr. (12NC) 929002252834
 Net Weight (Piece) 0.230 kg
 Model Number 9290022528

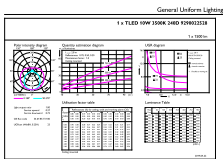
Dimensional drawing



TLED120-277V 16.5W-25/28/32W 3500K G14ND

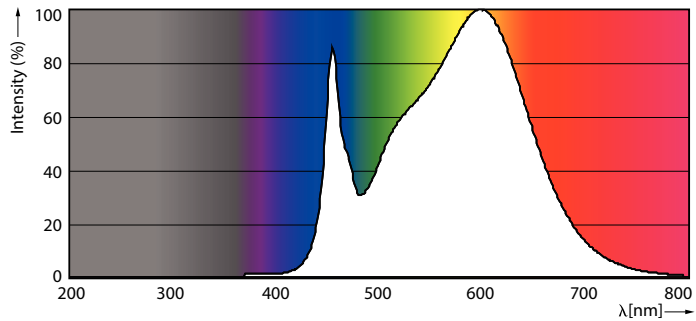
Product	D1	D2	A1	A2	A3
10T8/COR/48-835/ IF15/G/DIM 10/1	25.7 mm	28 mm	1198.1 mm	1205.2 mm	1212.3 mm

Photometric data



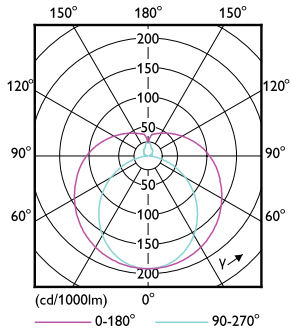
General Uniform Light
 1-1 TLED 120V 200K 3400 KPH01212
 © 2020 Philips Lighting B.V.

LEDTube_10T8_COR_48-835_IF15_G 10_1-GUL



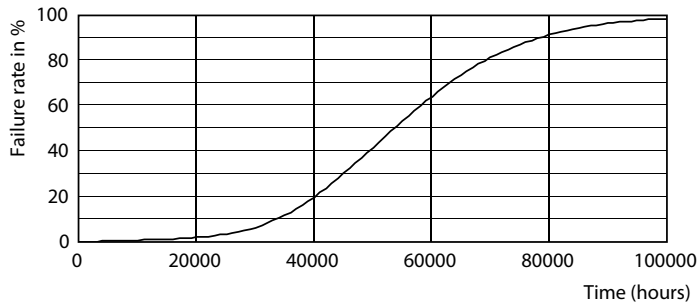
LEDTube_10T8_COR_48-835_IF15_G 10_1-POC

Photometric data

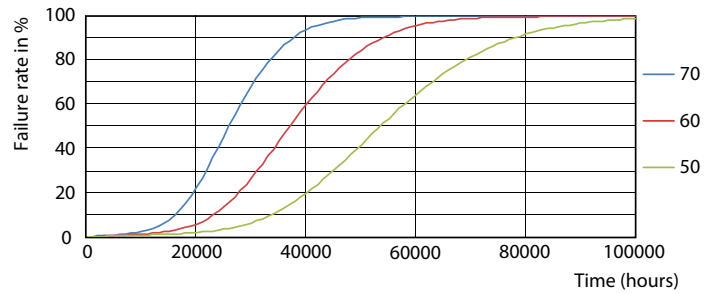


LEDtube 10W G13 840 ND

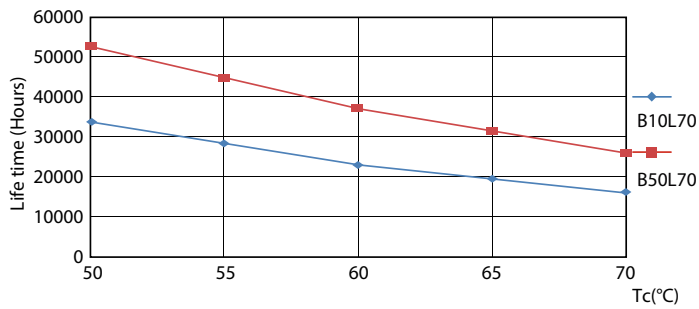
Lifetime



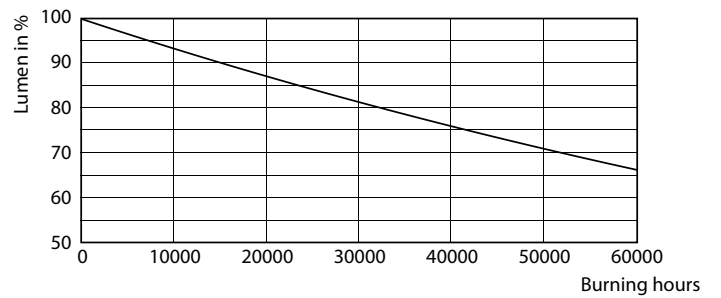
LEDtube 10W G13 850 ND



LEDtube 10W G13 850 ND



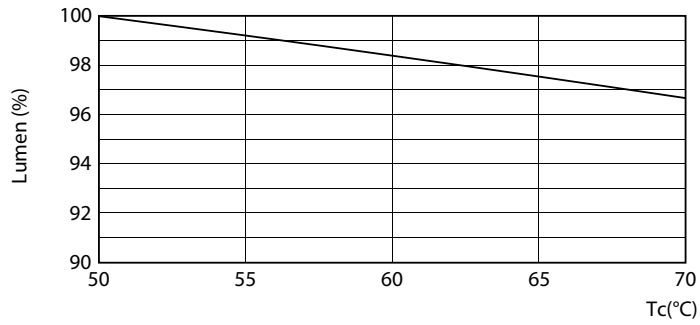
LEDtube 10W G13 850 ND



LEDtube 10W G13 850 ND

T8

Lifetime



LEDtube 10W G13 850 ND

